



# Management Plan

## for Antarctic Specially Protected Area No. 115 LAGOTELLERIE ISLAND, MARGUERITE BAY, GRAHAM LAND

### Introduction

The primary reason for the designation of Lagotellerie Island, Marguerite Bay, Graham Land (Latitude 67°53'20" S, Longitude 67°25'30" W; area 1.58 km<sup>2</sup>) as an Antarctic Specially Protected Area (ASP) is to protect environmental values, and primarily the terrestrial flora and fauna but also the avifauna within the Area.

Lagotellerie Island is approximately 2 km by 1.3 km, oriented generally in an east-west direction. The Area is 11 km south of Porquois Pas Island and 3.25 km west of the south end of Horseshoe Island. Lagotellerie Island was first mapped by Jean-Baptiste Charcot during the Deuxième Expédition Antarctique Française in 1908-10. There are no records of further visits until the 1940s, when the island was visited occasionally by American, Argentine and British field parties from nearby scientific stations. The island has not been the subject of any major scientific investigations and is thus largely undisturbed by human activities.

Lagotellerie Island was originally designated as a Specially Protected Area through Recommendation XIII-II (1985, SPA No. 19) after a proposal by the United Kingdom. It was designated on the grounds that the island contains a rich and diverse flora and fauna typical of the southern Antarctic Peninsula region. These values were reiterated in Recommendation XVI-6 (1991) when a management plan for the site was adopted, and are largely reaffirmed again in the present management plan.

Resolution 3 (2008) recommended that the Environmental Domains Analysis for the Antarctic Continent, be used as a dynamic model for the identification of Antarctic Specially Protected Areas within the systematic environmental-geographical framework referred to in Article 3(2) of Annex V of the Protocol (see also Morgan et al., 2007). Using this model, ASPA 115 is contained within Environment Domain B (Antarctic Peninsula mid-northern latitudes geologic). Other protected areas containing Domain B include ASPAs 108, 134, 140 and 153 and ASMAs 4. Resolution 3 (2017) recommended that the Antarctic Conservation Biogeographic Regions (ACBRs) be used for the identification of areas that could be designated as Antarctic Specially Protected Areas within the systematic environmental-geographical framework referred to in Article 3(2) of Annex V to the Environmental Protocol. ASPA 115 Lagotellerie Island sits within ACBR 3 Northwest Antarctic Peninsula (Terauds et al., 2012). Through Resolution 5 (2015) Parties recognised the usefulness of the list of Antarctic Important Bird Areas (IBAs) in planning and conducting activities in Antarctica.

Important Bird Area ANT098 Lagotellerie Island has the same boundary as ASPA 115, and was identified due to the presence of a large colony of blue-eyed cormorants.

The three other ASPAs are present within the Marguerite Bay area (ASPAs 107 Emperor Island, Dion Islands, ASPA 117 Avian Island and ASPA 129 Rothera Point). ASPA 107 Emperor Island and ASPA 117 Avian Island were designated to protect predominantly the avifauna of the area, while ASPA 129 Rothera Point was designated to monitor the impact of the nearby station on an Antarctic fellfield ecosystem. Therefore, Lagotellerie Island complements the local network of ASPAs by primarily protecting terrestrial biological communities.

### 1. Description of values to be protected

Following a visit to the ASPA in January 2022, the values specified in the earlier designation were reaffirmed. These values are set out as follows:

- Lagotellerie Island contains a relatively diverse flora typical of the southern Antarctic Peninsula region. Of particular interest is the abundance of the only two Antarctic flowering plants *Deschampsia antarctica* and *Colobanthus quitensis* which form stands up to 10 m<sup>2</sup>. These are amongst the largest stands known south of the South Shetland Islands, being only 90 km north of their southern limit. Both species flower profusely and the seeds have a greater viability than those produced in the South Orkney or South Shetland Islands.
- Numerous mosses and lichens form well-developed communities on the island. A few of the mosses are fertile, which is a rare phenomenon in most Antarctic localities.
- The island is notable for the occurrence of *Deschampsia antarctica* at the highest recorded altitude south of 56° S, with scattered small plants observed at heights of up to 275 m. The island therefore has a particular future scientific value for study of the influence of altitudinal gradient on biological viability for plant species represented at this site.
- The invertebrate fauna is rich and the island is one of the southernmost sites for the apterous midge *Belgica antarctica*
- The shallow loamy soil developed beneath the vegetation and its associated invertebrate fauna and microbiota are probably unique at this latitude



- There is a colony of 7482 breeding pairs of Adélie penguins (*Pygoscelis adeliae*) (counted January 2013) and one of the farthest south colonies of c. 250 blue-eyed cormorants (*Phalacrocorax atriceps*) at the south-east corner of the island. Numerous pairs of brown and south polar skuas (*Catharacta lonnbergii* and *C. maccormicki*) breed on the island.
- The values associated with the penguin and skua colonies are now considered to be their ecological interrelationship with the other biological features of exceptional value noted above.
- Fossiliferous strata present at the eastern end of the island are of particular geological value, as such formations are not commonly exposed in the Antarctic Peninsula Volcanic Group.
- The island has not been subject to frequent visits, scientific research or sampling and therefore may be regarded as one of the most pristine highly vegetated areas in the region.

## 2. Aims and objectives

Management at Lagotellerie Island aims to:

- avoid degradation of, or substantial risk to, the values of the Area by preventing unnecessary human disturbance to the Area;
- allow scientific research in the Area provided it is for compelling reasons which cannot be served elsewhere which will not jeopardise the natural ecological system in that Area;
- allow visits for management purposes in support of the aims of the management plan;
- prevent or minimise the introduction to the Area of non-native plants, animals and microorganisms;
- minimise the possibility of introduction of pathogens which may cause disease in bird populations within the Area;
- preserve the natural ecosystem of the Area as a reference area for future studies.

## 3. Management activities

The following management activities are to be undertaken to protect the values of the Area:

- Visits shall be made as necessary to assess whether the ASPA continues to serve the purposes for which it was designated and to ensure management and maintenance measures are adequate.
- The Management Plan shall be reviewed at least every five years and updated as required.
- Markers, signs or other structures erected within the Area for scientific or management purposes shall be secured and maintained in good condition and removed when no longer required.

- In accordance with the requirements of Annex III to the Protocol on Environmental Protection to the Antarctic Treaty, abandoned equipment or materials shall be removed to the maximum extent possible provided doing so does not adversely impact on the environment and the values of the Area.
- A copy of this Management Plan shall be made available at Rothera Research Station (UK; Latitude 67°34' S, Longitude 68°07' W) General San Martín Station (Argentina; Latitude 68°08' S, Longitude 67°06' W) and the Turkish Antarctic Research Station (TARS; Latitude 67°49' S, Longitude 67°14' W).
- All scientific and management activities undertaken within the Area should be subject to an Environmental Impact Assessment, in accordance with the requirements of Annex I of the Protocol on Environmental Protection to the Antarctic Treaty.

## 4. Period of designation

The ASPA is designated for an indefinite period.

## 5. Maps

Figure 1. Lagotellerie Island Antarctic Specially Protected Area No. 115, Marguerite Bay, location map, showing the location of General San Martín Station (Arg.), the station Teniente Luis Carvajal (Chile), Adelaide Island, Rothera Research Station (UK) and nearby ASPA 129 at Rothera Point, also on Adelaide Island, and the location of the other protected areas in the region [Emperor Island, Dion Islands (ASPAs 107) and Avian Island (ASPAs 117)]. 'Base Y' (UK) (Historic Monument No. 63) on Horseshoe Island is shown. Inset: the location of Lagotellerie Island along the Antarctic Peninsula.

Figure 2. Lagotellerie Island (ASPAs 115) topographic map. Map specifications: Projection: Lambert Conformal Conic. Standard parallels: 1st 63° 20' 00" S; 2nd 76° 40' 00" S. Central Meridian: 65° 00' 00" W. Latitude of Origin: 70° 00' 00" S. Spheroid: WGS84. Datum: Mean Sea Level. Vertical contour interval 20 m. Horizontal and vertical accuracy expected to be better than ±5 m.

Figure 3. Lagotellerie Island (ASPAs 115) geological sketch map.

Figure 4. Normalised Difference Vegetation Index (NDVI), derived from satellite imagery, for ASPA No. 115 Lagotellerie Island, Marguerite Bay, Graham Land, showing green vegetation cover using a colour scale of yellow → orange → red, with red indicating the highest NDVI values



## 6. Description of the Area

### 6(i) Geographical coordinates and natural features

#### BOUNDARIES AND CO-ORDINATES

The corner co-ordinates of the Area are shown in Table 1.

Corner	Latitude	Longitude
northwest	67°52'30" S	67°27'00" W
northeast	67°52'30" S	67°22'00" W
southwest	67°54'00" S	67°27'00" W
southeast	67°54'00" S	67°22'00" W

The Area includes all of Lagotellerie Island and unnamed adjacent islands and islets. The Area encompasses all of the ice-free ground, permanent ice and semi-permanent ice found within the boundaries, but excludes the marine environment extending greater than 10 m offshore from the low tide water line (Map 2). Boundary markers have not been installed because the coast itself is a clearly defined and visually obvious boundary.

Lagotellerie Island is steep-sided and rocky, with about 13% permanent ice cover, most of which is on the southern slopes. The island rises to twin peaks of 268 m and 288 m separated by a broad saddle at around 200 m, with precipitous cliffs up to this height on the south, west and east sides. The upper northern slopes also have steep cliffs, intersected by gullies, screes and traversed by broad rock terraces. The lower northern slopes are more gentle, particularly on the eastern half of the island, with a broad rocky terrace at an elevation of about 15 m which is formed of frost-shattered raised beach debris.

#### GEOLOGY

The bulk of Lagotellerie Island is formed of quartz diorite of unknown age, cut by pink, coarse-grained granodiorite and numerous basic and felsic dykes (Map 3). At the eastern end of the island the plutonic rocks are in fault contact with folded, mildly hornfelsed volcanic rocks of Jurassic–Cretaceous age. These consist of agglomerates, andesitic lavas and tuffs of the Antarctic Peninsula Volcanic Group, with plant remains – probably Jurassic – present in shaly beds interbedded with tuff. Such fossiliferous strata are not commonly exposed in the Antarctic Peninsula Volcanic Group, and are therefore of particular geological importance.

Locally extensive areas of coarse sand and gravel derived from weathered quartz-diorite occur on slopes, ledges, gullies and depressions; the most extensive accumulations are on the saddle between the two summits where the soil is sorted into well-developed stone polygons, circles and stripes. On the broad rock terraces closed stands of moss and grass have developed a relatively rich loamy earth up to 25 cm in depth. Glacial erratics are common on the island.

#### TERRESTRIAL BIOLOGICAL COMMUNITIES

The island has a relatively diverse flora and luxuriant development of plant communities, representative of the southern maritime Antarctic region. Use of satellite remote sensing techniques (Normalised Difference Vegetation Index) showed the area of green vegetation within the ASPA to be 0.06 km<sup>2</sup> (c. 3.7% of the ASPA area). The rich terrestrial biology of Lagotellerie Island was first noted by Herwil Bryant, biologist at East Base (US, on Stonington Island; now Historic Monument No. 55), during a visit in 1940–41 when he observed growths of moss, the Antarctic hair grass *Deschampsia antarctica*, and “a small flowering plant” (almost certainly the Antarctic pearlwort *Colobanthus quitensis*), in a small gully – believed to be that found at the north-eastern end of the island – which he considered of such unusual richness for the region that he unofficially referred to it as “Shangri-la Valley”. He did not describe the less luxuriant but more extensive communities of *Deschampsia antarctica* and *Colobanthus quitensis* found on the higher north-facing slopes of the island. These slopes and terraces also provide favourable microclimatic conditions for growth, with a relatively long snow-free growing season, and support an abundance of *Deschampsia antarctica* and *Colobanthus quitensis*, the grass forming closed swards of up to 10 m<sup>2</sup> on some of the terraces. These are among the largest stands of these plants known south of the South Shetland Islands. Both species flower abundantly and the seeds have a greater viability than those produced in the South Orkney or South Shetland Islands, yet they are close to the southern limit of their range. Lagotellerie Island, however, is notable for the growth of *Deschampsia antarctica* at the highest altitude recorded south of 56° S, with scattered small plants observed at heights of up to 275 m. *Colobanthus quitensis* has been observed growing up to 120 m on the island.

Lagotellerie Island also has a rich cryptogamic flora, with small stands of well-developed communities containing several mosses and lichens which are rare at this latitude (notably the mosses *Platydictya jungermannioides* and *Polytrichastrum alpinum*, and lichens *Caloplaca isidioclada*, *Fuscoparmelia gerlachei* and *Usnea trachycarpa*). The number of bryophyte species thus far identified include 20 mosses and two liverworts (*Barbilophozia hatcheri* and *Cephaloziella varians*), and there are at least 60 lichen species. A comprehensive floristic survey of the island has not yet been undertaken, and numerous species, especially of crustose lichens, remain to be accurately determined.

Vegetation is best developed on a series of rock terraces at around 30–50 m a.s.l. on the northern side of the island. Here, both *Deschampsia* and *Colobanthus* are abundant, and closed grass swards form stands of several square metres. Associated with these, especially on the moister terraces, are usually the mosses *Brachythecium austrosalebrosus*, *Bryum* spp., *Pohlia nutans*, *Polytrichastrum alpinum* and *Sanionia uncinata*, and liverworts *Barbilophozia hatcheri* and *Cephaloziella varians*. Many of these grass swards are used as nest sites by skuas.





In drier habitats, especially on scree and rock faces, there are locally dense stands dominated by the macrolichens *Usnea sphacelata* and *U. subantarctica*, with *Pseudephebe minuscula*, *Umbilicaria decussata*, and a large number of crustose taxa. Several lichens are associated with the grass and moss communities (e.g. *Cladonia* spp., *Leproloma* spp., *Leptogium puberulum*, *Ochrolechia frigida*, *Psoroma* spp.). Near the penguin and cormorant colonies several colourful nitrophilous lichens are abundant (e.g. *Buellia* spp., *Caloplaca* spp., *Fuscoparmelia gerlachei*, *Xanthoria* spp.).

Numerous lichens (notably *Caloplaca isidioclada*, *Pseudephebe minuscula*, *Usnea sphacelata*, *Umbilicaria decussata* and many crustose taxa) and a few mosses (notably *Grimmia refelxidens*) occur close to the summit of the island, as do scattered individual plants of *Deschampsia*. Few bryophytes produce sporophytes at far southern latitudes, but several mosses are fertile on Lagotellerie Island (e.g. *Andreaea regularis*, *Bartramia patens*, *Bryum amblyodon*, *B. pseudotriquetrum*, *Grimmia reflexidens*, *Hennediella heimii*, *Pohlia nutans*, *Schistidium antarctici*, *Syntrichia princeps*).

Specific studies of the invertebrate fauna have not been conducted on Lagotellerie Island. However, at least six species of arthropod have been recorded: *Alaskozetes antarcticus*, *Gamasellus racovitzi*, *Globoppia loxolineata* (Acari), *Cryptopygus antarcticus*, *Friesea grisea* (Collembola), and *Belgica antarctica* (Diptera, Chironomidae). Several species of nematophagous fungi have been isolated from the soils associated with mosses and *Deschampsia* on Lagotellerie Island (*Cephalosporium balanoides*, *Dactylaria gracilis*, *Dactylella ellipsospora*), species widely distributed in similar habitats throughout the Antarctic and also commonly found in temperate soils.

Bryant reported several small pools present on the island in the early 1940s, which presumably are the same as, or close to, those observed more recently on the extensive flat low-lying ground on the northern side of the island. He recorded the pools contained many phyllopod crustaceans identified as *Branchinecta granulosa*. Rocks in one of the pools were coated in a bright green filamentous alga, on which the mites *Alaskozetes antarcticus* were observed. *A. antarcticus* was also common under pebbles on the pool floor. Other microorganisms of the trochelminth type were observed living in the algae, with a pink rotifer identified as *Philodina gregaria* being especially numerous. Small tufts of a grey-green alga were observed on large pebbles close to the pool bottom. The algae have not been described in more detail, although the presence of *Prasiola crispa* has been noted. More recent observations in the early 1980s suggested there were no permanent freshwater bodies on the island, but temporary runnels in summer were found, with some brackish pools in rock depressions near the northern coast. Inspection visit January 1989 and February 2011 noted the presence of several small melt pools of around 5-10 m<sup>2</sup>, some with fringing wet moss carpets, and suggested these were probably the habitat of *Belgica antarctica*.

## VERTEBRATE FAUNA

A small Adélie penguin (*Pygoscelis adeliae*) colony occupies the eastern promontory of the island (Map 2). Numbers have varied from a low of perhaps 350-400 pairs based on an estimate made in December 1936 to a high of 2402 pairs recorded in an accurate nest count in November 1955. A count of the colony made on 19 February 2011 noted approximately 1850 adult and juvenile birds (accurate to within 10%). An accurate count in Jan 2013 recorded 7482 breeding pairs, while a rough estimate in January 2022 counted 12-13,000 adults and c. 6,000 chicks. The colony was regularly used as a source of eggs for personnel stationed at the nearby British Base Y on Horseshoe Island between 1955-60. It was reported that some 800 eggs were taken during 1955. The number of breeding pairs dropped to around 1000 in 1959 and 1960. Adélie penguin colonies are known to exhibit high interannual change in numbers as a result of a variety of natural factors, and in March 1981 it was observed that all of the approximately 1000 chicks in the colony had died. A chick count made in February 1983 suggested the colony consisted of approximately 1700 pairs, which is considered accurate to within 15-25%.

A small colony of blue-eyed cormorants (*Phalacrocorax atriceps*) has been observed on the eastern promontory of the island, which is one of the most southerly breeding sites reported for the species. Some 200 immature birds were observed close to the island, within view of the colony, on 16 January 1956. The colony was reported to consist of 10 nests on 17 February 1983. The colony was not seen in the January 1989 inspection on Lagotellerie Island; however, in February 2011, c. 250 adults and chicks were observed and with many nest containing two large chicks, and a similar number were recorded in January 2022.

Brown and south polar skuas (*Catharacta loenbergi* and *C. maccormicki*) are also present, with 12 nests reported in 1956, when it was noted that many of the chicks were definitely south polar skua (*C. maccormicki*). It was estimated in 1958 that five pairs nested around the penguin colony and that both species occurred. A group of 59 non-breeding birds of both species was recorded on 12 January 1989 mid-way along the northern side of the island. Two Wilson's storm petrel (*Oceanites oceanicus*) nests were recorded on 14 January 1956. A kelp gull (*Larus dominicanus*) nest, with eggs, was recorded in the 'Shangri-La Valley' by Bryant in December 1940 (for more information on bird life in the Area see Harris et al., 2015).

The inspection visit in January 1989 reported 12 Weddell seals (*Leptonychotes weddellii*) hauled out on a small shingle beach at the base of a rocky spit on the north coast, but no other seals were seen. In contrast, the inspection visit of February 2011 noted c. 200 fur seals on northern side of the island and within the Adélie penguins colony (particular to the south of the colony above the pebble beaches). Twenty Weddell seals were also observed.



## HUMAN IMPACT

The most significant environmental impact at Lagotellerie Island appears to have been from the practice of egg harvesting to feed personnel at bases operating nearby in the period 1955-60. The inspection visit of January 2022 reported there was no evidence of any recent physical or biological change on the island and it was concluded that the Area was continuing to serve the purpose for which it was designated.

### 6(ii) Access to the Area

- Access to the Area shall be by boat. Access from the sea should be to the northern coast of the island (Map 2), unless specifically authorised by Permit to land elsewhere or when landing along this coast is impractical because of adverse conditions. The coastline is generally rocky and recommended landing sites are located on the north coast at Lat. 67°52'57" Long. 067°24'03" and Lat. 67°53'04" Long. 067°23'30" (see Map 2).
- Access to the Area is not permitted 100 m either side of the gully on the northeast coast at Lat. 67°53'10" Long. 067°23'13" (i.e. the coast below the valley unofficially referred to as "Shangri-la Valley" by Bryant; see Map 2). The valley inland of this coastline contains the richest vegetation growth on the island, and to reduce trampling impacts, non-essential activity within this area is discouraged (Map 2). These restrictions apply equally to persons wishing to access the Area via sea ice in the winter.
- Under exceptional circumstances necessary for purposes consistent with the objectives of the Management Plan helicopters may be permitted to land at the designated landing site located beside the recommended field camp on the broad rock/permanent snow platform about half-way along the northwest coast at about 15 m altitude, and 200 m inland from the sea (Lat. 67°53'04" Long. 067°23'43"). Helicopters shall not land elsewhere within the Area unless specifically authorized by Permit.
- Within the Area the operation of aircraft should be carried out, as a minimum requirement, in compliance with the 'Guidelines for the Operation of Aircraft near Concentrations of Birds' contained in Resolution 2 (2004). When conditions require aircraft to fly at lower elevations than recommended in the guidelines, aircraft should maintain the maximum elevation possible and minimise the time taken to transit.
- Overflight of the eastern end of the island over the penguin/cormorant colony is prohibited below 610 m (2000 feet) (Map 2).
- Use of helicopter smoke grenades is prohibited within the Area unless absolutely necessary for safety. If used all smoke grenades should be retrieved.

### 6(iii) Location of structures within and adjacent to the Area

A cairn and the remains of a mast erected for survey purposes in the 1960s are present on the summit of the island. During the inspection visit in February 2011, some of the cabling and the remains of black survey flag associated with the mast were removed. The five 8-10 m long bamboo posts, from which the original mast was constructed, were collected together and secured along with six metal stakes near the eastern summit of the island (288 m). In February 2017 all of the bamboo posts and metal stakes were removed.

A cairn (c. 1 m high) is present on the north coast of the island (Lat. 67°53'16" Long. 067°22'51") and a 30 cm high pile of stones containing a short wooden post with a 2.5 cm diameter metal disc at one end inscribed with the number '10' is present on cliffs west of the penguin colony (Lat. 67°53'17" Long. 067°22'46"). No other structures are known to exist on the island.

Two year-round scientific research stations operate in the vicinity: General San Martín (Argentina; Lat. 68°08' S, Long. 67°06' W) which is 29.5 km south-southeast, and Rothera Research Station (UK; Lat. 67°34' S, Long. 68°07' W) which is 46 km to the northwest. A summer-only station, Teniente Luis Carvajal (Lat. 67°46' S, Long. 68°55' W), has been operated by Chile at the southern end of Adelaide Island since 1985 and the Turkish Antarctic Research Station has constructed on nearby Horseshoe (Lat. 67°49' S, Long. 67°14' W).

### 6(iv) Location of other protected areas in the vicinity

The nearest protected areas to Lagotellerie Island are Emperor Island, Dion Islands (ASPA 107) about 55 km west, Avian Island (ASPA 117) 65 km west, Leonie Islands and south-east Adelaide Island (ASPA 177) 45 km to the northwest and Rothera Point (ASPA 129) 46 km to the northwest (Map 1). Several Historic Sites and Monuments are located in the vicinity: 'Base Y' (UK) on Horseshoe Island (HSM No. 63); 'Base E' (UK) (HSM No. 64) and buildings and artefacts at and near East Base (US) (HSM No. 55), both on Stonington Island; and installations of San Martín Station (Argentina) at Barry Island (HSM No. 26).

### 6(v) Special zone within the Area

None.



## 7. Permit conditions

### 7(i) General permit conditions

Entry into the Area is prohibited except in accordance with a Permit issued by an appropriate national authority as designated under Article 7 of Annex V of the Protocol on Environmental Protection to the Antarctic Treaty.

Conditions for issuing a Permit to enter the Area are that:

- it is issued for a compelling scientific purpose which cannot be served elsewhere;
- it is issued for essential management purposes such as inspection, maintenance or review;
- the actions permitted will not jeopardise the natural ecological system in the Area;
- any management activities are in support of the objectives of this Management Plan;
- the actions permitted are in accordance with this Management Plan;
- the Permit must be carried within the Area;
- permits shall be issued for a stated period;
- a report or reports are supplied to the authority or authorities named in the Permit;
- the appropriate authority should be notified of any activities/measures undertaken that were not included in the authorised Permit.

### 7(ii) Access to and movement within over the Area

- Vehicles are prohibited within the Area
- Movement within the Area shall be on foot.
- Pilots, helicopter or boat crew, or other people on helicopters or boats, are prohibited from moving on foot beyond the immediate vicinity of their landing site unless specifically authorised by Permit.
- Pedestrian traffic should be kept to the minimum consistent with the objectives of any permitted activities and every reasonable effort should be made to minimise trampling effects, i.e. all movement should be undertaken carefully so as to minimise disturbance to the soil and vegetated surfaces, walking on rocky terrain if practical.
- Overflight of bird colonies within the Area by Remotely Piloted Aircraft Systems (RPAS) shall not be permitted unless for compelling scientific or operational purposes, and in accordance with a permit issued by an appropriate national authority. Furthermore, operation of RPAS within or over the Area shall be in accordance with the 'Environmental guidelines for operation of Remotely Piloted Aircraft Systems (RPAS) in Antarctica' (Resolution 4 (2018)) (available at: [https://documents.ats.aq/recatt/att645\\_e.pdf](https://documents.ats.aq/recatt/att645_e.pdf)).

### 7(iii) Activities which may be conducted in the Area

- Scientific research that will not jeopardise the ecosystem or scientific values of the Area and which cannot be served elsewhere;
- Essential management activities, including monitoring.

### 7(iv) Installation, modification or removal of structures

No new structures are to be erected within the Area, or scientific equipment installed, except for compelling scientific or management reasons and for a pre-established period, as specified in a permit. Installation (including site selection), maintenance, modification or removal of structures and equipment shall be undertaken in a manner that minimises disturbance to the values of the Area. All structures or scientific equipment installed in the Area shall be clearly identified by country, name of the principal investigator and year of installation. All such items should be free of organisms, propagules (e.g. seeds, eggs) and non-sterile soil, and be made of materials that can withstand the environmental conditions and pose minimal risk of contamination of the Area (see Section 7(vi)). Removal of specific structures or equipment for which the Permit has expired shall be a condition of the Permit. Permanent structures or installations are prohibited.

### 7(v) Location of field camps

When necessary for purposes specified in the Permit, temporary camping is allowed at the designated site on the broad rock/permanent snow platform about half-way along the northwest coast at about 15 m altitude, and 200 m inland from the sea (Lat. 67°53'04" Long. 067°23'43"; Map 2).

### 7(vi) Restrictions on materials and organisms which can be brought into the Area

No living animals, plant material or microorganisms shall be deliberately introduced into the Area. To ensure that the floristic and ecological values of the Area are maintained, special precautions shall be taken against accidentally introducing microbes, invertebrates or plants from other Antarctic sites, including stations, or from regions outside Antarctica. All sampling equipment or markers brought into the Area shall be cleaned or sterilized. To the maximum extent practicable, footwear and other equipment used or brought into the Area (including bags or backpacks) shall be thoroughly cleaned before entering the Area. Further guidance can be found in the *CEP non-native species manual* (Resolution 4 (2016)) and the *Environmental code of conduct for terrestrial scientific field research in Antarctica* (Resolution 5 (2018)). In view of the presence of breeding bird colonies within the Area, no poultry products, including wastes from such products and products containing uncooked dried eggs, shall be released into the Area or into the adjacent sea.



No herbicides or pesticides shall be brought into the Area. Any other chemicals, including radio-nuclides or stable isotopes, which may be introduced for scientific or management purposes specified in the Permit, shall be removed from the Area at or before the conclusion of the activity for which the Permit was granted. Release of radio-nuclides or stable isotopes directly into the environment in a way that renders them unrecoverable should be avoided. Fuel or other chemicals shall not be stored in the Area unless specifically authorised by Permit condition. They shall be stored and handled in a way that minimises the risk of their accidental introduction into the environment. Materials introduced into the Area shall be for a stated period only and shall be removed by the end of that stated period. If release occurs which is likely to compromise the values of the Area, removal is encouraged only where the impact of removal is not likely to be greater than that of leaving the material in situ. The appropriate authority should be notified of anything released and not removed that was not included in the authorised Permit.

### **7(vii) Taking or harmful interference with native flora or fauna**

Taking or harmful interference with native flora or fauna is prohibited, except by Permit issued in accordance with Annex II to the Protocol on Environmental Protection to the Antarctic Treaty. Where taking or harmful interference with animals is involved, the *SCAR Code of Conduct for the Use of Animals for Scientific Purposes in Antarctica* (Resolution 4 (2019)) should be used as a minimum standard.

To prevent human disturbance of the breeding cormorant colony and in particular the premature fledging of juvenile cormorants, visitors shall not approach within 10 m of the cormorant colony on the eastern tip of the island between 15 October and 28 February, unless authorised by Permit for specific scientific or management purposes.

### **7(viii) Collection and removal of materials not brought into the Area by the Permit holder**

Collection or removal of anything not brought into the Area by the Permit holder shall only be in accordance with a Permit and should be limited to the minimum necessary to meet scientific or management needs. Permits shall not be granted in instances where it is proposed to take, remove or damage such quantities of soil, native flora or fauna that their distribution or abundance on Lagotellerie Island would be significantly affected. Anything of human origin likely to compromise the values of the Area, which was not brought into the Area by the Permit Holder or otherwise authorised, may be removed unless the impact of removal is likely to be greater than leaving the material in situ: if this is the case the appropriate authority should be notified.

### **7(ix) Disposal of waste**

As a minimum standard, all waste shall be disposed of in accordance with Annex III to the Protocol on Environmental Protection to the Antarctic Treaty. In addition, all wastes shall be removed from the Area. Liquid human wastes may be disposed of into the sea. Solid human waste should not be disposed of to the sea, but shall be removed from the Area. No solid or liquid human waste shall be disposed of inland.

### **7(x) Measures that may be necessary to ensure that the aims and objectives of the Management Plan continue to be met**

- Permits may be granted to enter the Area to carry out scientific research, monitoring and site inspection activities, which may involve the collection of a small number of samples for analysis, to erect or maintain signboards, or to carry out protective measures.
- Any long-term monitoring sites shall be appropriately marked and the markers or signs maintained.
- Scientific activities shall be performed in accordance with the *SCAR Environmental Code of Conduct for Terrestrial Scientific Field Research in Antarctica* (Resolution 5 (2018)). Geological research shall be undertaken in accordance with the *SCAR Environmental Code of Conduct for Geosciences Field Research Activities in Antarctica* (Resolution 1 (2021)).

### **7(xi) Requirements for reports**

The principal permit holder for each visit to the Area shall submit a report to the appropriate national authority as soon as practicable, and no later than six months after the visit has been completed. Such reports should include, as appropriate, the information identified in the visit report form contained in the Guide to the Preparation of Management Plans for Antarctic Specially Protected Areas. If appropriate, the national authority should also forward a copy of the visit report to the Party that proposed the Management Plan, to assist in managing the Area and reviewing the Management Plan. Wherever possible, Parties should deposit the original or copies of the original visit reports, in a publicly accessible archive to maintain a record of usage, for the purpose of any review of the Management Plan and in organising the scientific use of the Area.





## 8. Supporting documentation

- Bryant, H.M. 1945. Biology at East Base, Palmer Peninsula, Antarctica. Reports on scientific results of the United States Antarctic Service Expedition 1939-1941. In *Proceedings of the American Philosophical Society* 89(1): 256-69.
- Block, W. and Star, J. 1996. Oribatid mites (Acari: Oribatida) of the maritime Antarctic and Antarctic Peninsula. *Journal of Natural History* 30: 1059-67.
- Convey, P. and Smith, R.I. Lewis 1997. The terrestrial arthropod fauna and its habitats in northern Marguerite Bay and Alexander Island, maritime Antarctic. *Antarctic Science* 9(1):12-26.
- Croxall, J.P. and Kirkwood, E.D. 1979. The distribution of penguins on the Antarctic Peninsula and the islands of the Scotia Sea. British Antarctic Survey, Cambridge.
- Farquharson, G.W and Smellie, J.L. 1993. Sedimentary section, Lagotellerie Island. Unpublished document, British Antarctic Survey Archives Ref 1993/161.
- Gray, N.F. and Smith, R.I. Lewis. 1984. The distribution of nematophagous fungi in the maritime Antarctic. *Mycopathologia* 85: 81-92.
- Harris, C.M., Lorenz, K., Fishpool, L.D.C., Lascelles, B., Cooper, J., Coria, N.R., Croxall, J.P., Emmerson, L.M., Fijn, R.C., Fraser, W.L., Jouventin, P., LaRue, M.A., Le Maho, Y., Lynch, H.J., Naveen, R., Patterson-Fraser, D.L., Peter, H.-U., Poncet, S., Phillips, R.A., Southwell, C.J., van Franeker, J.A., Weimerskirch, H., Wienecke, B., and Woehler, E.J. 2015. *Important Bird Areas in Antarctica* 2015. BirdLife International and Environmental Research & Assessment Ltd., Cambridge.
- Lamb, I.M. 1964. Antarctic lichens: the genera *Usnea*, *Ramalina*, *Himantormia*, *Alectoria*, *Cornicularia*. *BAS Scientific Report* 38, British Antarctic Survey, Cambridge.
- Matthews D.W. 1983. The geology of Horseshoe and Lagotellerie Islands, Marguerite Bay, Graham Land. *British Antarctic Survey Bulletin* 52: 125-154.
- McGowan, E.R. 1958. Base Y Ornithological report 1958-59. Unpublished BAS internal report AD6/2Y/1958/Q.
- Morgan, F., Barker, G., Briggs, C., Price, R. and Keys, H. 2007. Environmental Domains of Antarctica Version 2.0 Final Report, Manaaki Whenua Landcare Research New Zealand Ltd, 89 pp.
- Poncet, S. and Poncet, J. 1987. Censuses of penguin populations of the Antarctic Peninsula, 1983-87. *British Antarctic Survey Bulletin* 77: 109-129.
- SCAR (Scientific Committee on Antarctic Research). (2009). Environmental code of conduct for terrestrial scientific field research in Antarctica. ATCM XXXII IP4.
- Smith, H.G. 1978. The distribution and ecology of terrestrial protozoa of sub-Antarctic and maritime Antarctic islands. *BAS Scientific Report* 95, British Antarctic Survey, Cambridge.
- Smith, R.I. Lewis, 1982. Farthest south and highest occurrences of vascular plants in the Antarctic. *Polar Record* 21: 170-73.
- Smith, R.I. Lewis, 1996. Terrestrial and freshwater biotic components of the western Antarctic Peninsula. In Ross, R.M., Hofmann, E.E. and Quetin, L.B. *Foundations for ecological research west of the Antarctic Peninsula*. Antarctic Research Series 70: American Geophysical Union, Washington D.C.: 15-59.
- Star, J. and Block, W. 1998. Distribution and biogeography of oribatid mites (Acari: Oribatida) in Antarctica, the sub-Antarctic and nearby land areas. *Journal of Natural History* 32: 861-94.
- Terauds, A., Chown, S. L., Morgan, F., Peat, H. J., Watt, D., Keys, H., Convey, P., and Bergstrom, D. M. 2012. Conservation biogeography of the Antarctic. *Diversity and Distributions* 18: 726-41.
- United Kingdom. 1997. *List of protected areas in Antarctica*. Foreign and Commonwealth Office, London.
- Usher, M.B. 1986. Further conserved areas in the maritime Antarctic. *Environmental Conservation* 13: 265-66.
- Vaughan, A. 1994. A geological field report on N and E Horseshoe Island and SE Lagotellerie Island, Marguerite Bay, and some adjoining areas of S. Graham Land. 1993/94 Field Season. Unpublished report, BAS Archives Ref R/1993/GL5.
- Woehler, E.J. (ed) 1993. The distribution and abundance of Antarctic and sub-Antarctic penguins. SCAR, Cambridge





Figure 1. Lagotellerie Island Antarctic Specially Protected Area No. 115, Marguerite Bay, location map, showing the location of General San Martin Station (Arg.), the station Teniente Luis Carvajal (Chile), Adelaide Island, Rothera Research Station (UK) and nearby ASPA 129 at Rothera Point, also on Adelaide Island. The map also show the location of the Turkish Antarctic Research Station (TARS) on Horseshoe Island and the location of the other protected areas in the region [Emperor Island, Dion Islands (ASPA 107) and Avian Island (ASPA 117)]. 'Base Y' (UK) (Historic Monument No. 63) on Horseshoe Island is shown. Inset: the location of Lagotellerie Island along the Antarctic Peninsula.

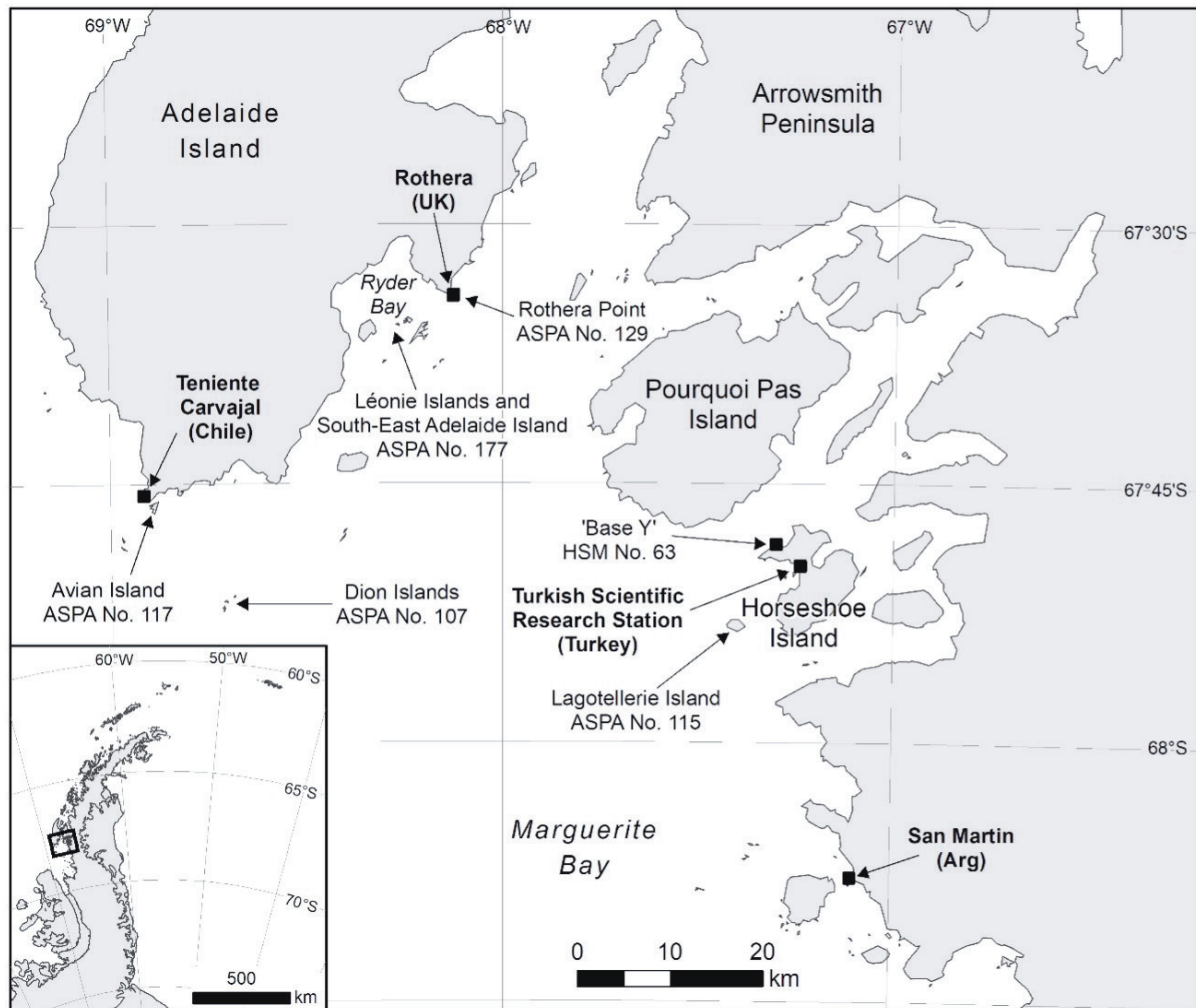




Figure 2. Lagotellerie Island (ASPA 115) topographic map.

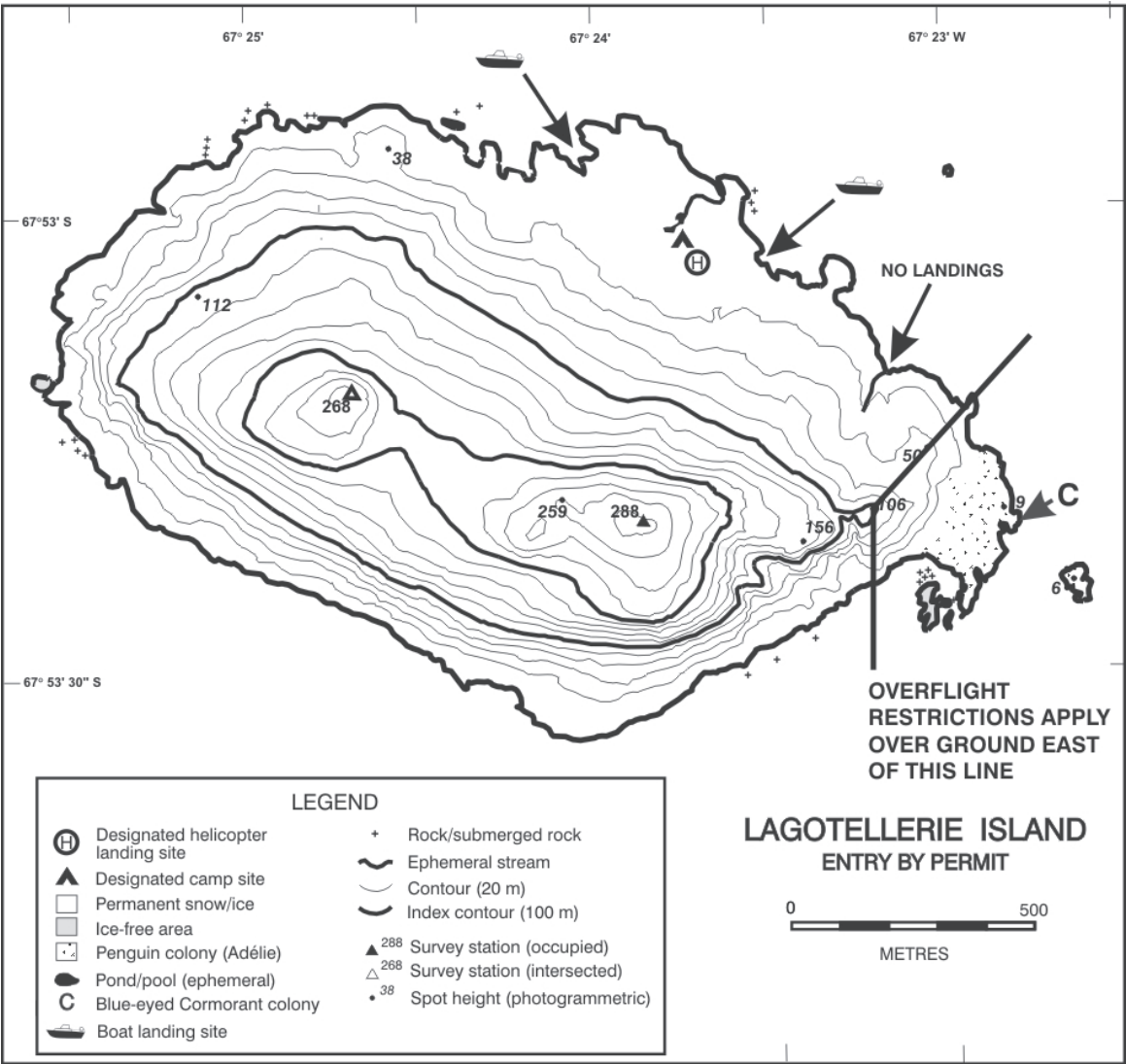
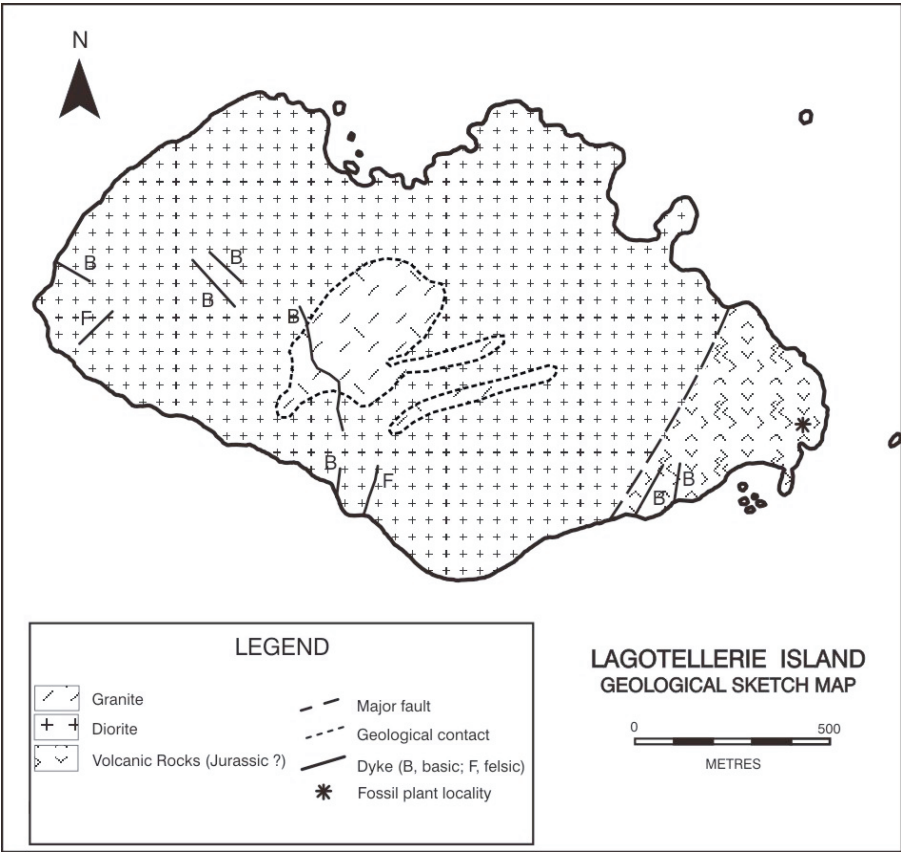




Figure 3. Lagotellerie Island (ASPA 115) geological sketch map.





*Figure 4. Normalised Difference Vegetation Index (NDVI), derived from satellite imagery, for ASPA No. 115 Lagotellerie Island, Marguerite Bay, Graham Land, showing green vegetation cover using a colour scale of yellow → orange → red, with red indicating the highest NDVI values*

