

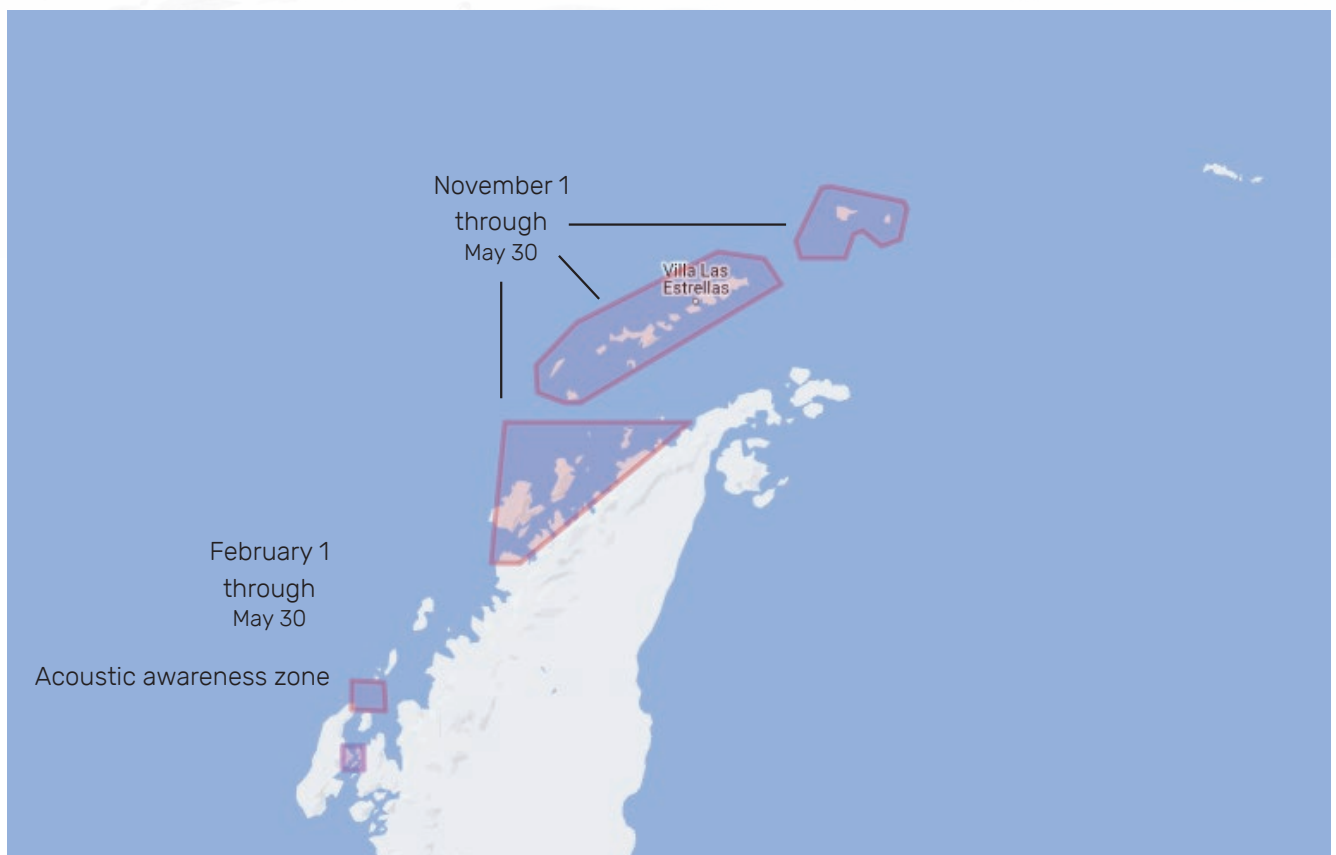
# IAATO's Geofenced Whale Areas

In 2019, IAATO Operators unanimously adopted mandatory procedures to mitigate ship strike risks from vessel operations in the Antarctic Peninsula region. This was in response to studies suggesting that humpback populations are growing and in recognition of the Peninsula being an area of significant human activity. Increased shipping has the potential to lead to increased whale strikes.

IAATO reports whale strikes to the International Whaling Commission (see IAATO Whale Collision Report Form in Section 4 of the IAATO Field Operations Manual).

## IAATO Procedures for Operations in the Vicinity of Whales

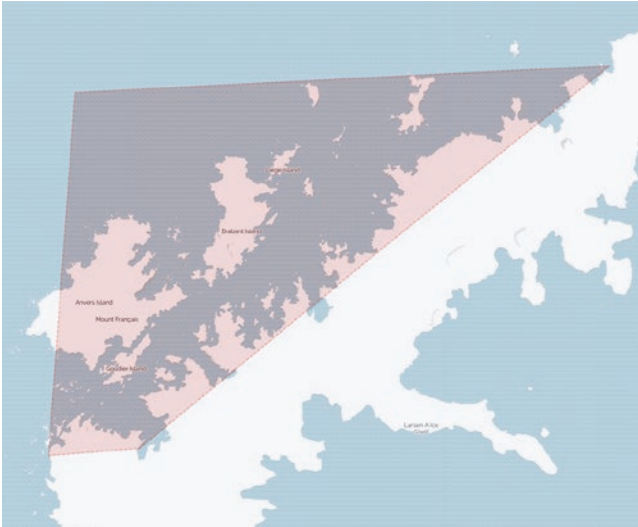
*Figure 1 – Geofenced time-areas where IAATO's procedures for operating in the vicinity of whales apply.*



At IAATO’s Annual Meeting in 2021, IAATO Operators committed to the following:

1. A 10kn speed restriction, measured as “Speed Over Ground”, for vessels<sup>1</sup> operating in IAATO geofenced time-areas (Figure 1). This is a mandatory procedure. All IAATO operators will participate.
2. Whale watching and whale avoidance mitigation training should be undertaken by all bridge teams while operating in any areas where whales are routinely seen.

The geofenced time-areas are as follows:



- November 1<sup>st</sup> through May 30 in the Gerlache Strait and adjacent waters, in the area between 63.65°S and 65.35°S, including Dallmann Bay west to 64.2°W;

Gerlache Strait		
No.	Latitude	Longitude
1	63° 36.60'S	59° 6.64'W
2	63° 36.31'S	63° 51.80'W
3	65° 9.82'S	64° 12.00'W
4	65° 9.99'S	63° 27.67'W



- February 1 through May 30 in the Marta Passage entering Crystal Sound, 67.8°W to 67.0°W.

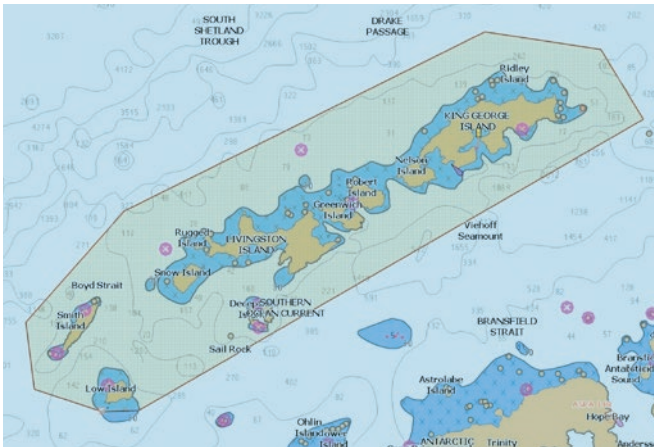
Crystal Sound		
No.	Latitude	Longitude
1	66° 41.09'S	67° 46.11'W
2	66° 22.90'S	67° 46.11'W
3	66° 24.00'S	66° 55.15'W
4	66° 42.30'S	66° 55.15'W

**Emergency or other extenuating circumstances such as sever weather should be communicated\* to the Secretariat as soon as is practicable via [shipscheduler@iaato.org](mailto:shipscheduler@iaato.org).**

**\*Communication with the Secretariat is for notification purposes only**

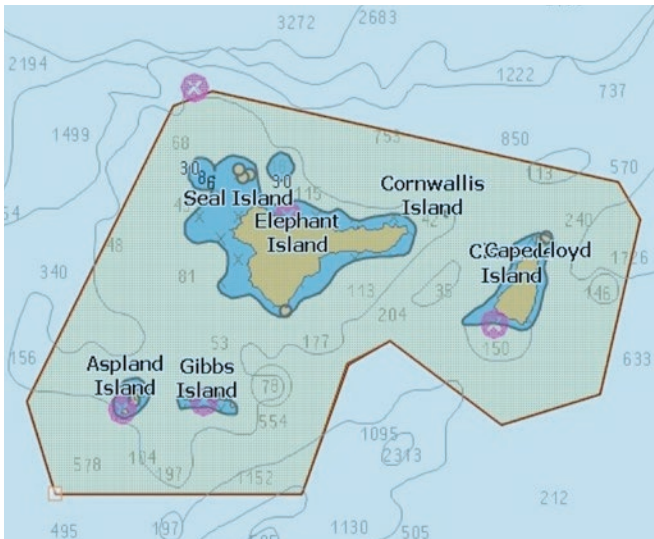
<sup>1</sup>Small boats, eg Zodiacs, RIBs and NIADs are exempt from the 10kts speed limit when operating within the geofenced area. If Whales or other marine mammals are notably present, then small craft under this exemption shall take necessary steps to comply with IAATO operating procedures and guidelines, reducing speed and maximizing distance as appropriate.  
<sup>\*</sup>Similar to the two new geofenced areas, the November 1 extended start date (previously January 1) in the Gerlache Strait is also voluntary for the 2023-24 and 2024-25 seasons. *While this is a voluntary measure, it is expected that all IAATO Operators will participate and acknowledge these changes unless there are emergency or extenuating circumstances.*

The following two geofenced areas have been added on a voluntary trial basis for the 2023-24 and 2024-25 seasons before becoming mandatory in the 2025-26 season. *While this is a voluntary measure, it is expected that all IAATO Operators will participate and acknowledge these changes unless there are emergency or extenuating circumstances.*



- November 1 through May 30 in the South Shetland Islands;

South Shetland Islands		
No.	Latitude	Longitude
1	62°57.000' S	063°03.000' W
2	63°16.000' S	063°00.000' W
3	63°23.000' S	062°18.000' W
4	63°23.000' S	061°55.000' W
5	62°00.000' S	056°47.000' W
6	61°41.000' S	057°14.000' W
7	61°37.000' S	058°23.000' W
8	62°27.000' S	062°00.000' W
9	62°57.000' S	063°03.000' W



- November 1 through May 30 in the area surrounding Elephant Island.

Elephant Island		
No.	Latitude	Longitude
1	61°29.000' S	056°26.000' W
2	60°50.000' S	055°45.000' W
3	60°48.000' S	055°34.000' W
4	61°00.000' S	053°40.000' W
5	61°05.000' S	053°34.000' W
6	61°28.000' S	053°45.000' W
7	61°32.000' S	054°13.000' W
8	61°21.000' S	055°44.000' W
9	61°24.000' S	054°56.000' W
10	61°41.000' S	055°09.000' W
11	61°41.000' S	056°18.000' W
12	61°29.000' S	056°26.000' W

**The Slow Down areas are also highlighted in the Live Ship Scheduler and RedPort.**