

## Prospect Point (Draft)

Ferin Head, Graham Coast.  
On the W coast of Graham Land,  
nearly 2 mi S of Ferin Head and  
immediately E of the Fish Islands.

66° 0' 26.9"S, 65° 20' 22.01"W

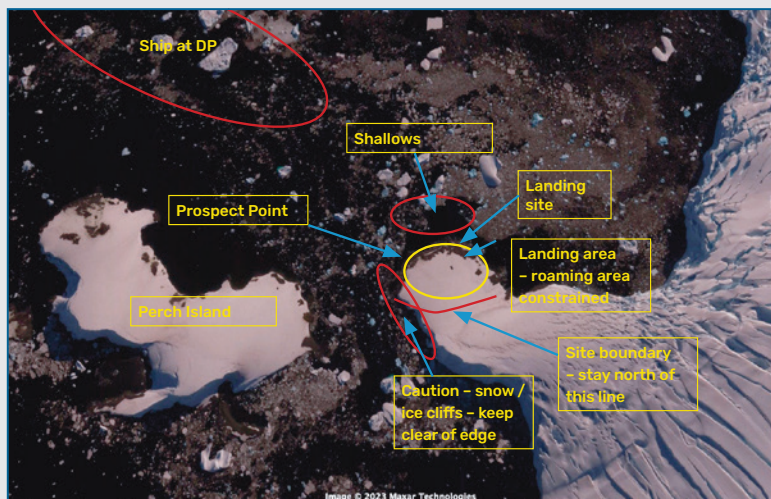
# IAATO

## visitor site guide



### Key Features

- Continental landing.
- Glacial landscape.
- Nearby Fish Islands provide watersports opportunities.



### Description

#### TOPOGRAPHY

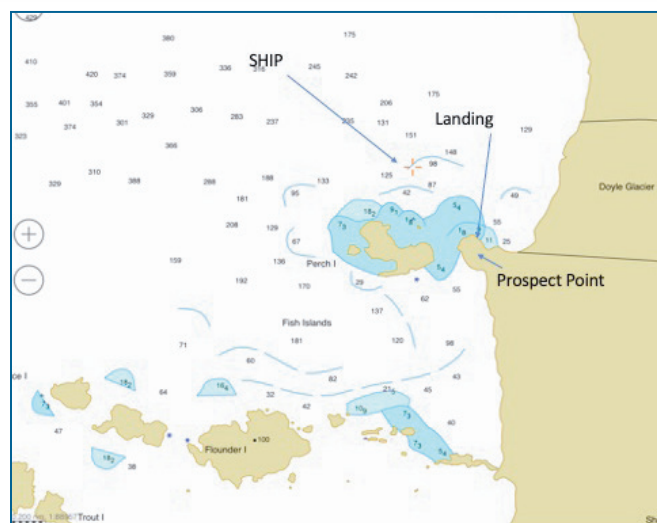
Prospect Point was the site of the British Base "J" established in 1957 and occupied until the completion of local field work in 1959. The remains of the hut, called Penola, were removed in 2004 and only the foundation remains today.

Landing is mostly rocky, pebbles.

#### FAUNA

Confirmed breeders: Kelp Gulls

Common visitors: Adelle penguins, Antarctic shags



## Visitor Impact

### POTENTIAL IMPACTS

None.

## Landing Requirements

### SHIPS\*

**Ships per day:** Maximum 3 ships per day (Cat 1 or Cat 2).

\*A ship is defined as a vessel which carries more than 12 passengers.

### VISITOR NUMBERS

Maximum of 100 visitors excluding guides.

### LANDING AREA

Low tide could impact approach due to rocks at landing site.

A small free roaming area around landing site.

### GUIDED WALKING AREA

Free roaming north of crevassed region.

### VISITOR SAFETY

Potential crevasse risk due to glaciated terrain.

Landing site is exposed to waves generated by glacier calvings.

Water operations must maintain appropriate distances from ice with movements from wind and tide.

### RESTRICTED ZONES

Glaciated terrain to south of possible landing should be closed/only traversed with trained and experienced guides.

## Visitor code of conduct

### BEHAVIOUR ASHORE

Small free roaming area should be marked with clear boundaries to prevent wandering into crevassed terrain.

