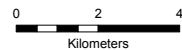


**Map 1: ASPA No. 137 - NW White Island - Topographic map**

20 Mar 2013  
United States Antarctic Program  
Environmental Research & Assessment



- Peak
- Contour (50m)
- Ice free ground
- Permanent ice
- Ice shelf / Ice tongue
- Estimated coastline
- ▭ Antarctic Specially Protected Area (ASPA) boundary
- ▲ Survey mark (monumented)
- Weddell seal observations Nov & Dec 2010, Nov 2011 (LaRue)
- × Weddell seal observations 1991 - 2007 (Garrott)
- Marked route



Projection: Lambert Conformal Conic  
 CM 167°05', SP1 78°, SP2 78°12', LO 77°30',  
 Spheroid and Datum: WGS84  
 Data sources: Topography - ADD v5.0 (horizontally adjusted  
 100m N and 240m E) using Hut Point GPS data, except White Island  
 contours derived by ERA from 4m LIDAR DEM (OSU/NASA/USGS);  
 Hut Point - Black Island route RPSC kinematic GPS (2008);  
 Survey marks: LINZ (Dec 2000);  
 Seal obs. pers comms - R Garrott, 2008; M LaRue (PGC), 2012.