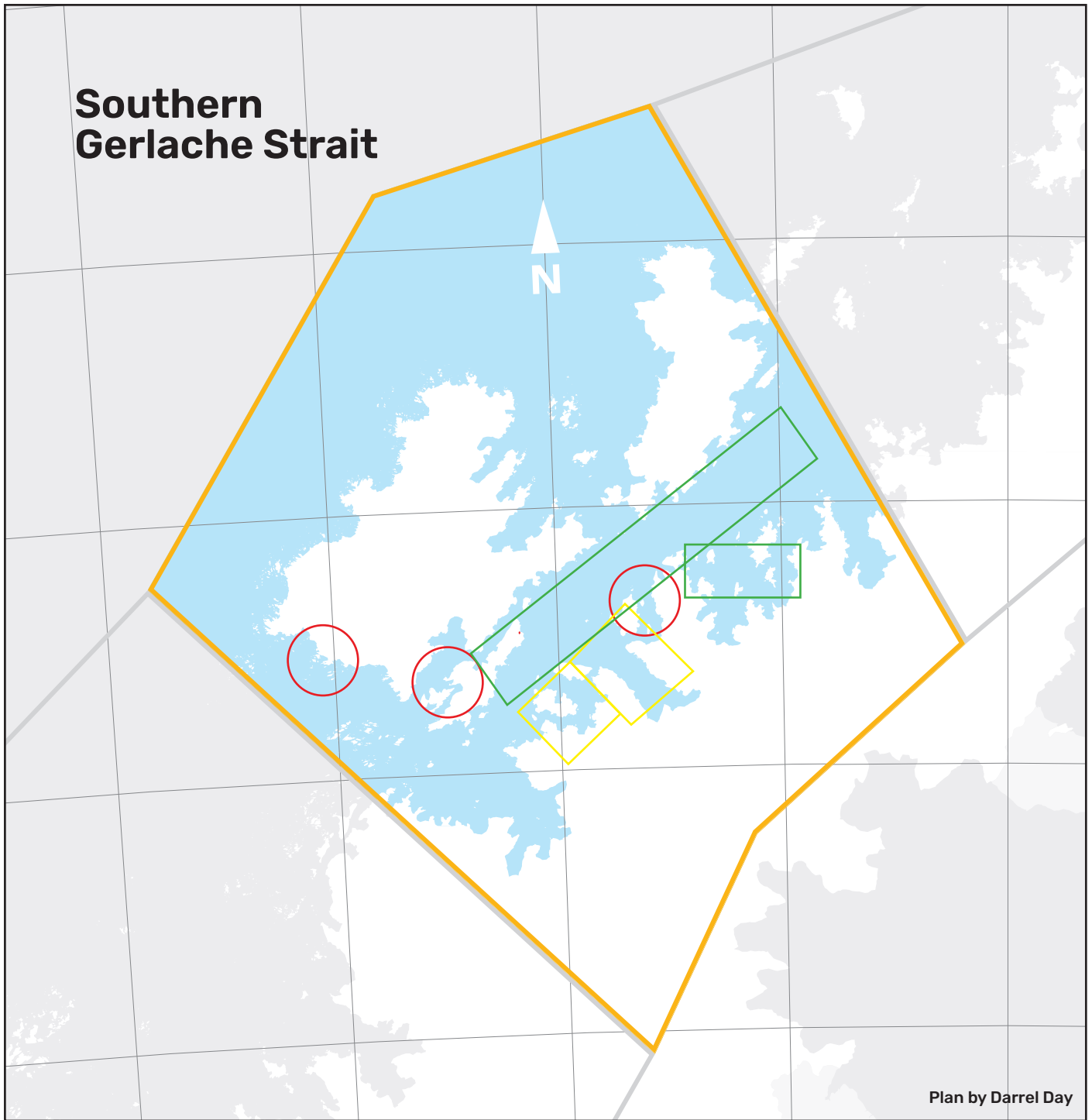


Southern Gerlache Strait



Plan by Darrel Day

Key

- Fly only with invitation or emergency (Palmer) or high vessel traffic sites (Neumayer Channel, Errera Channel)
- No fly zone due to vessel traffic
- No take off and landing, no scenic flights below 610m/2000ft

Zone	Boundary								Exclusion Radius (nm)	Area (Sq Miles approx.)
	North		East		South		West			
	Lat	Long	Lat	Long	Lat	Long	Lat	Long		
Gerlache Strait	-64.323	-62.009	-64.423	-61.807	-64.87	-63.206	-64.774	-63.391		
Wilhelmina Bay	-64.583	-61.921	-64.685	-61.935	-64.677	-62.437	-64.578	-62.428		
Neko Harbour	-64.7	-62.668	-64.828	-62.438	-64.92	-62.718	-64.792	-62.96		
Paradise Bay	-64.794	-62.958	-64.899	-62.756	-64.979	-62.989	-64.879	-63.191		
Errera Channel	-64.615	-62.628	-64.684	-62.474	-64.748	-62.632	-64.697	-62.784	4	67
Neumayer Channel	-64.76	-63.48	-64.834	-63.337	-64.892	-63.498	-64.831	-63.649	4	67
Palmer Station	-64.706	-64.047	-64.785	-63.913	-64.84	-64.065	-64.781	-64.223	4	67