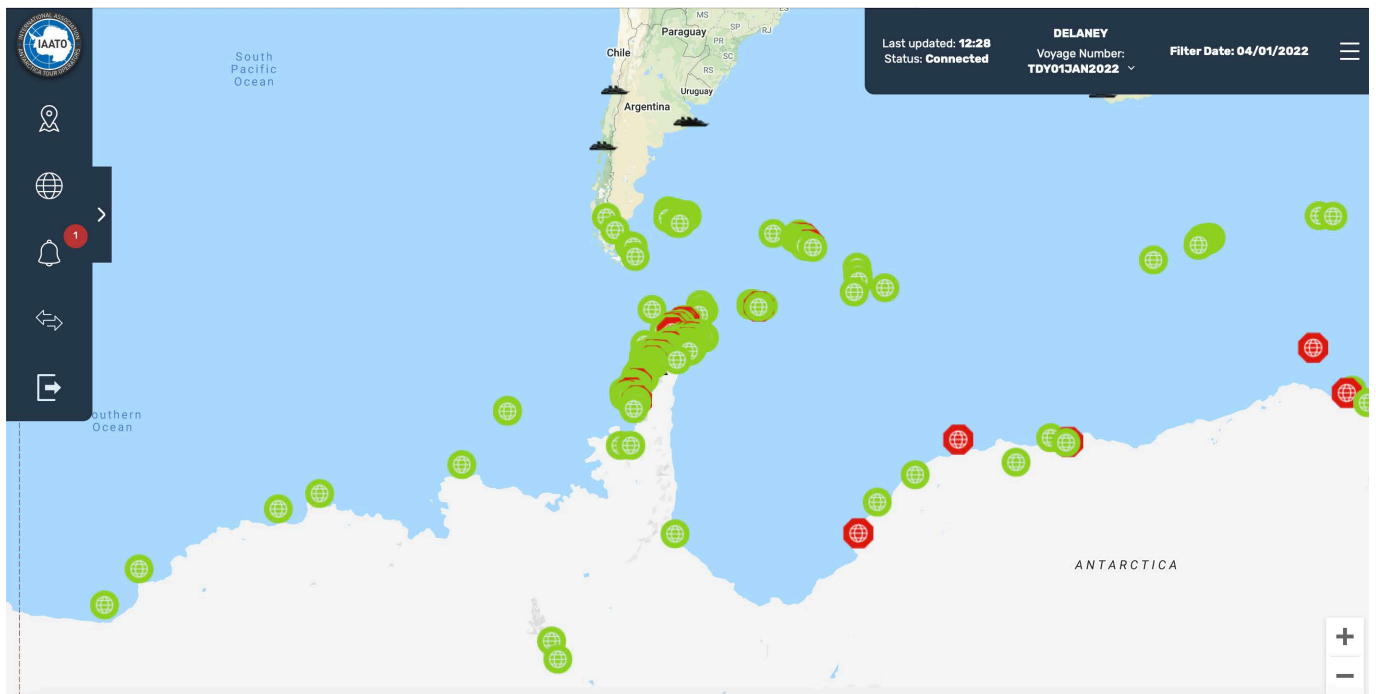




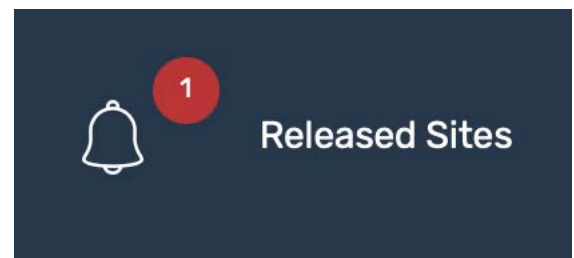
Live Ship Scheduler Guide



New for the 2021-22 Season

Release Notifications

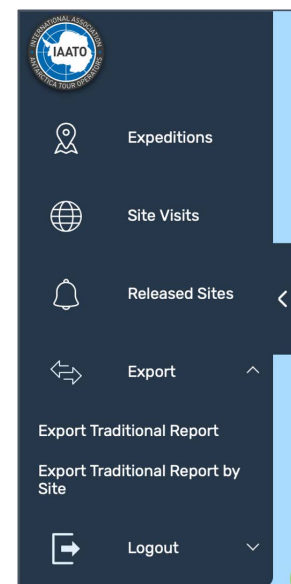
- Based on feedback from the field, IAATO has added a new feature to the Live Ship Scheduler. This new feature shows all vessel releases in real time and a backlog of releases for the previous 24 hours.
- The release notifications are displayed in the Live Ship Scheduler map with a bell icon in the left side menu. The bell will display a red number upon logging in showing all releases that have been made since the last login within the last 24 hours.
- When you click on the bell, a pop up window will appear showing the Site Name, the release date, the date of the site visit, the time slot, and if the visit was landed or non-landed.
- During your session, if a release in the release window gets booked, a red "Rebooked" sign will show to the left of the site name. This site release line will disappear from the release notifications window upon your next login.



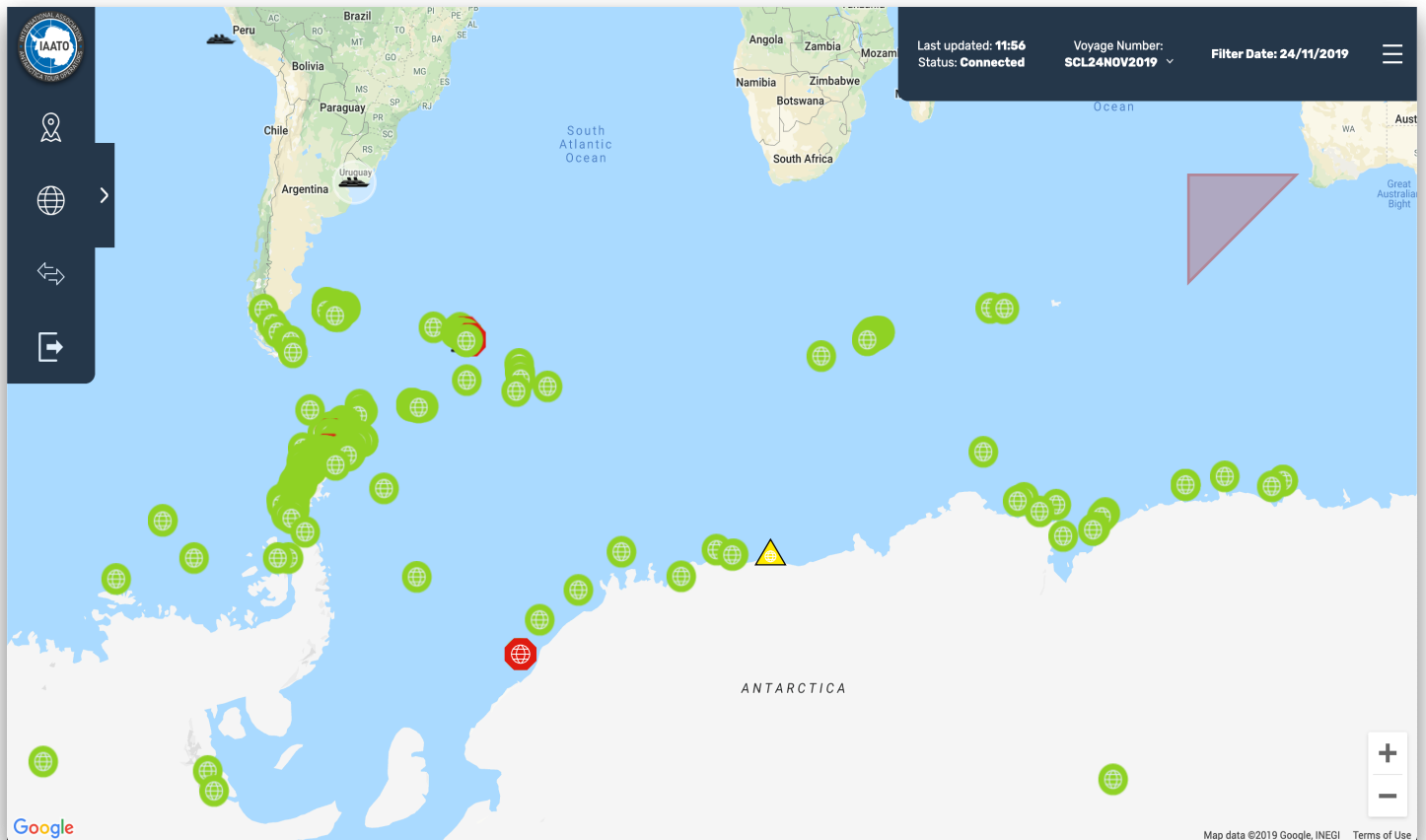
Released Sites				
Live site releases. Below are the site bookings that have been released within the last 24 hours, as well as during your active session.				
Site Name	Released On	Visit Date	Time Slot	Landed Visit
Snow Hill Island - Emperor Penguin Colony	20 Jul 2021 16:28	04 Jan 2022	07:31-13:00	Yes
Half Moon Island - Base Camara	19 Jul 2021 21:23	06 Jan 2022	13:01-18:30	Yes
Rebooked Half Moon Island - Chinstrap Colony	19 Jul 2021 21:23	06 Jan 2022	07:31-13:00	Yes
Chiloé Point	19 Jul 2021 21:22	19 Jul 2021	13:01-18:30	Yes
Curtiss Bay	19 Jul 2021 21:22	19 Jul 2021	07:31-13:00	Yes

Traditional Report by Site

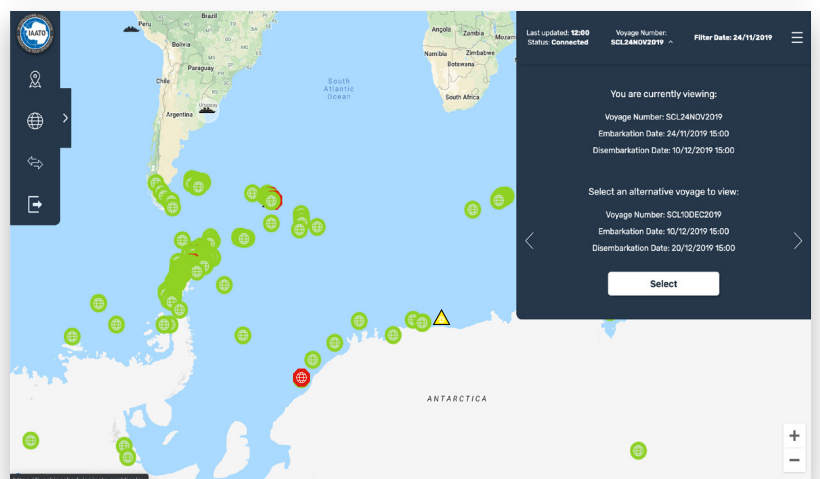
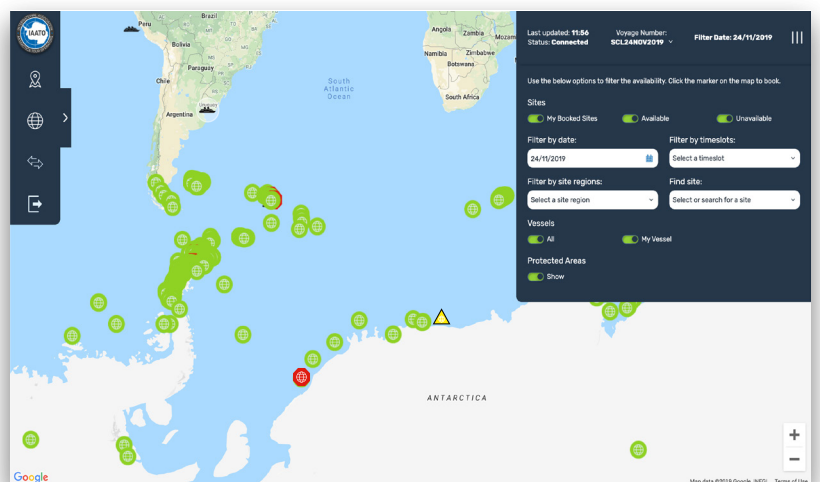
- The Traditional report, an excel document that shows the entire season's scheduled site visits sorted by date and vessel, can now be exported based on date and site.
- In the left side menu, select 'Export'. Then select, 'Export Traditional Report by Site'.



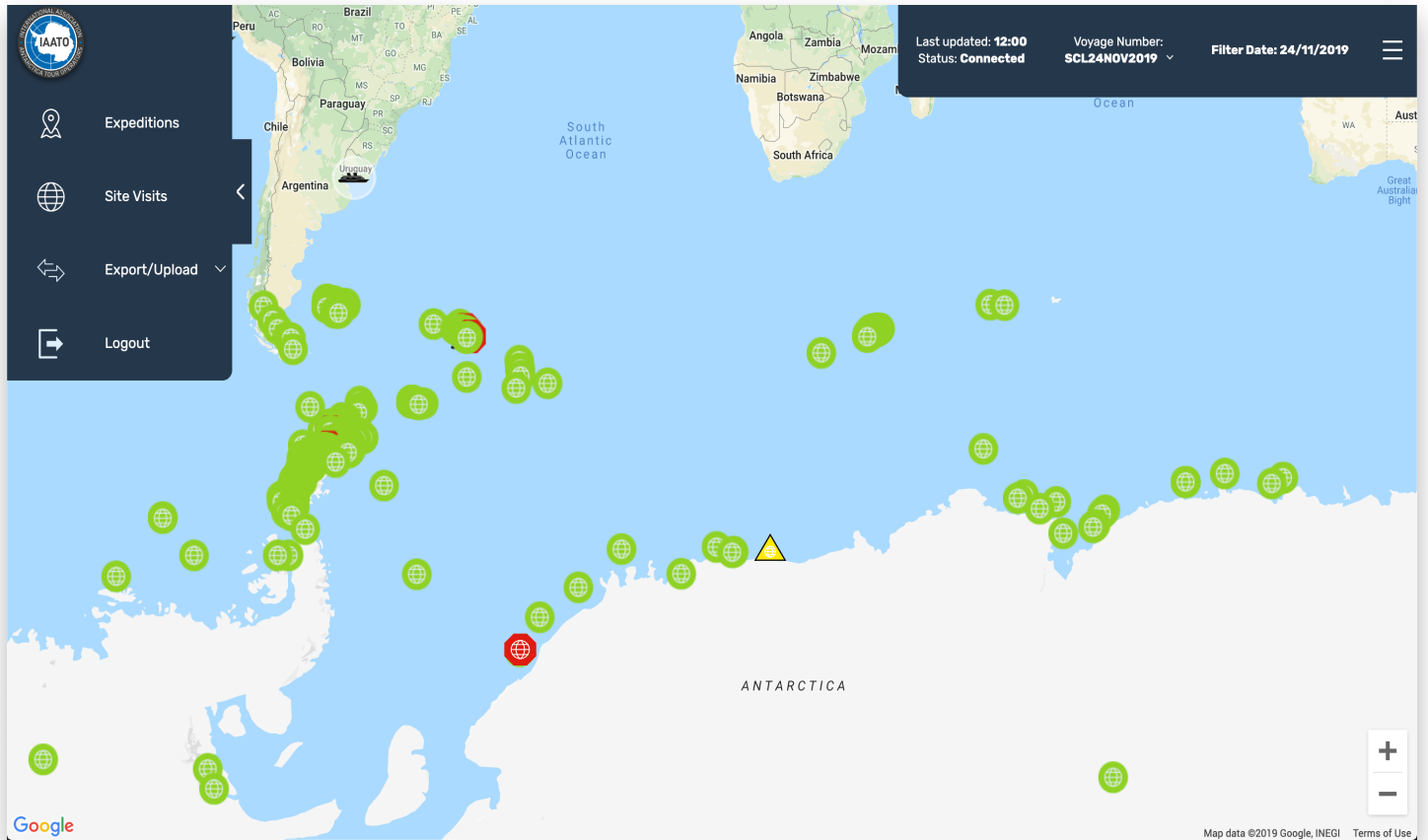
Ship Scheduler - Live Map



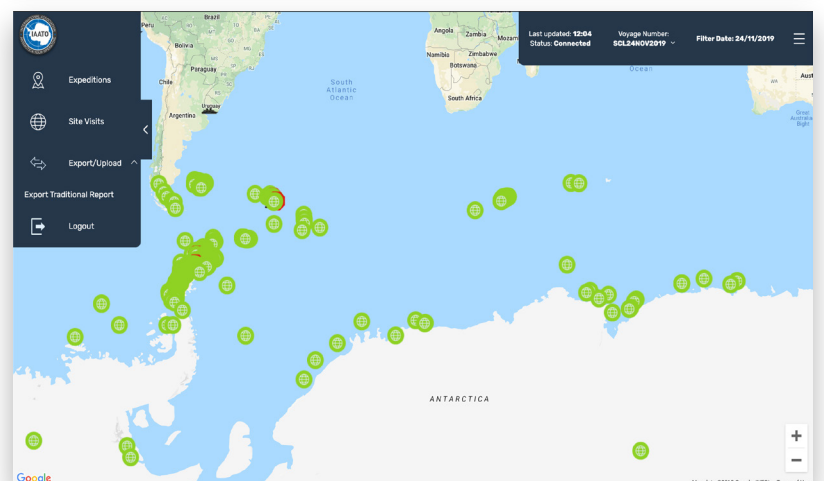
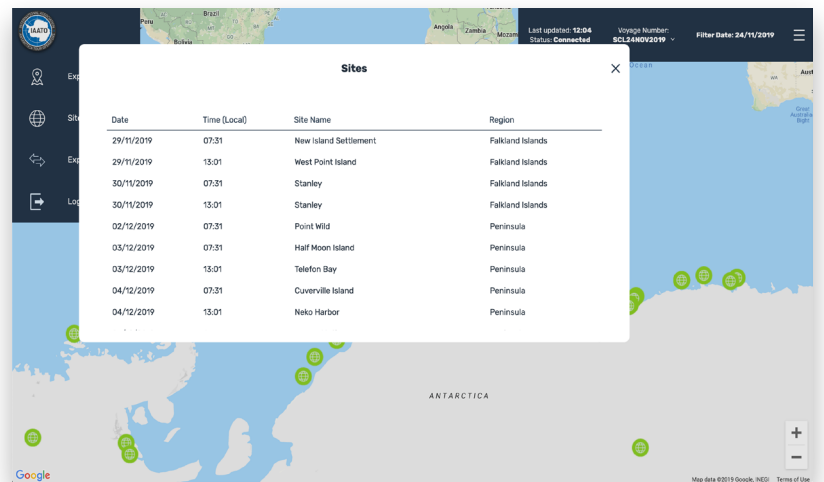
- To gain access to the Live IAATO Ship Scheduler the user will need to enter the account details which have been sent to them by the IAATO Secretariat.
- The live map can be accessed at <https://liveshipscheduler.iaato.org>. In order to use the live map the user must select a vessel and enter the corresponding PIN number.
- The Ship Scheduler Live Map has two navigation menus. The menu on the top right is used to interact in real-time with what is being displayed on the map.
- From the drop down, the user can toggle on and off which sites they would like to be displayed (my booked sites, available, and unavailable). The users own booked sites are displayed with a yellow triangle icon. Available sites are displayed with a green circle icon, and unavailable sites are displayed with a red hexagon icon. The user can also filter by date and timeslot, as well as by site regions. There is also a search function.
- Vessels are displayed with a black vessel icon, the users own vessel is highlighted with a white circle. The user can choose to show only their vessel, or show all vessels on the map. Protected areas are displayed with a red triangle shape. These can be toggled on and off in the drop down menu.
- The user can click on the voyage number drop down to view information about the selected voyage, and change voyages.



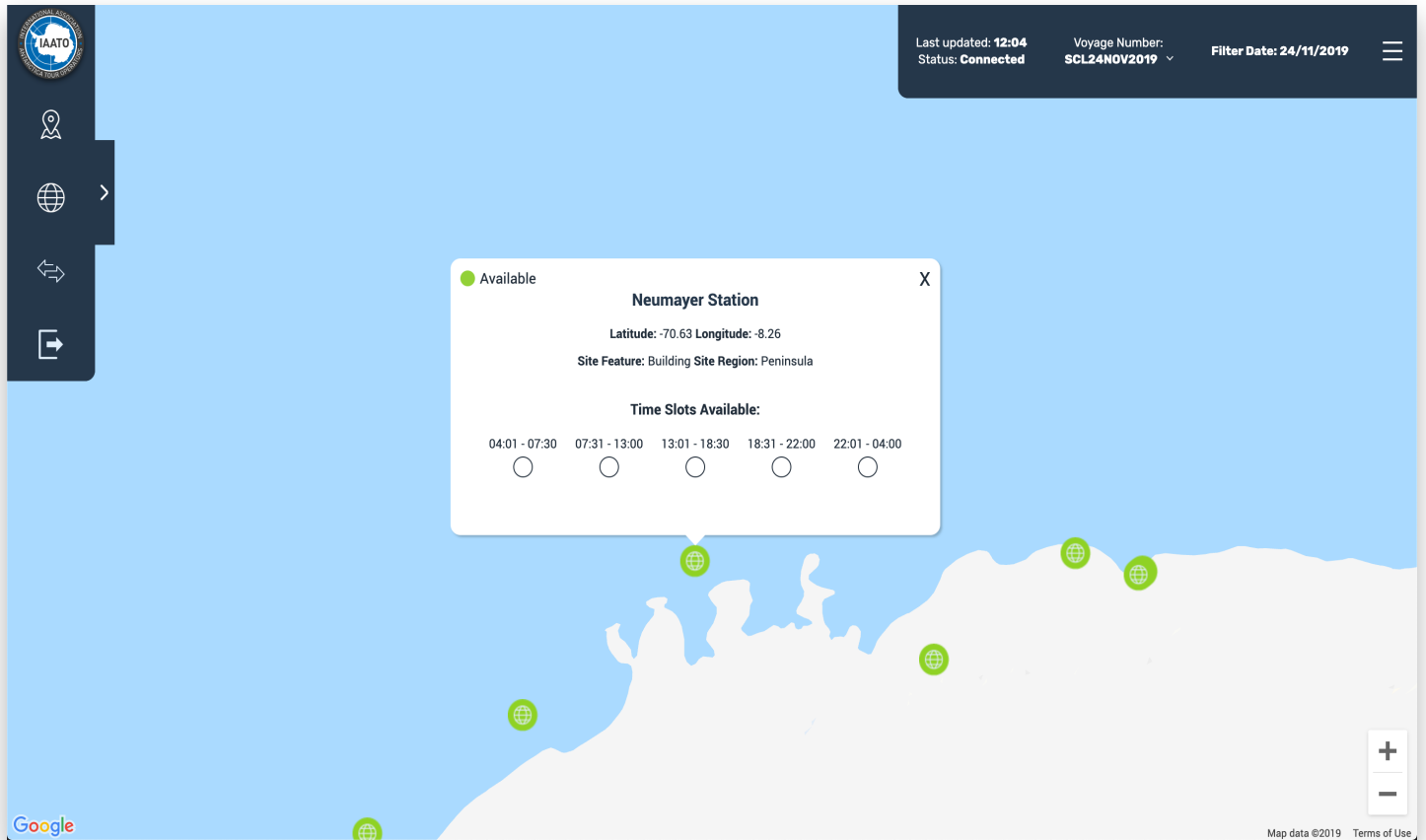
Ship Scheduler - Live Map



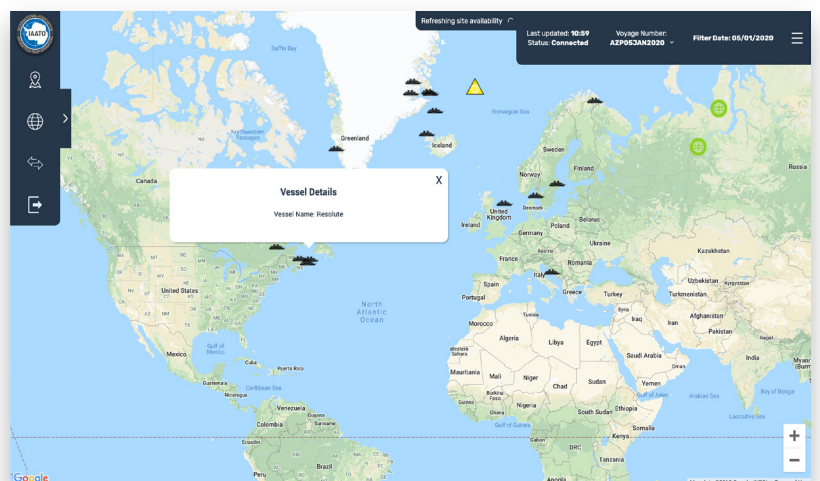
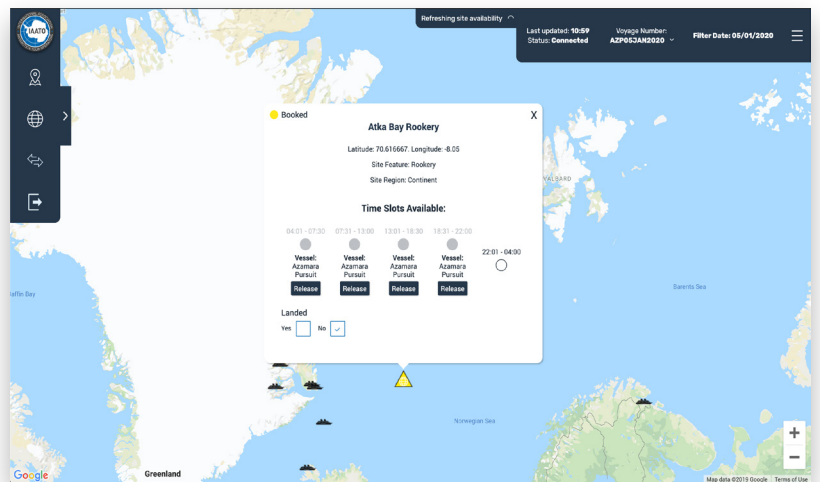
- The left navigation gives the user access to the expeditions list, site visits list, the option to export or upload, and the option to logout.
- When the user clicks on 'Expeditions' or 'Site Visits' a list will be displayed as a pop up with the relevant information.



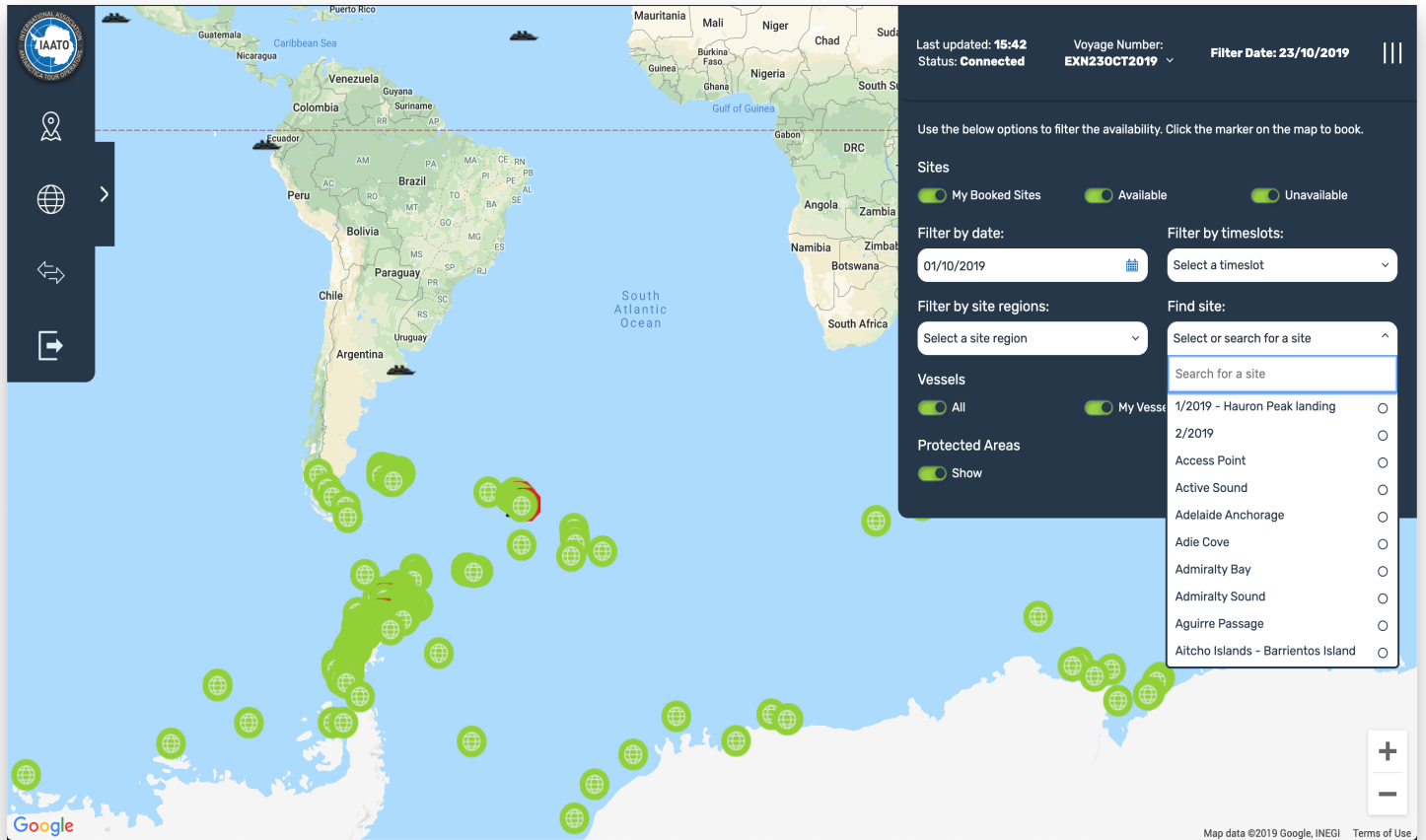
Ship Scheduler - Live Map



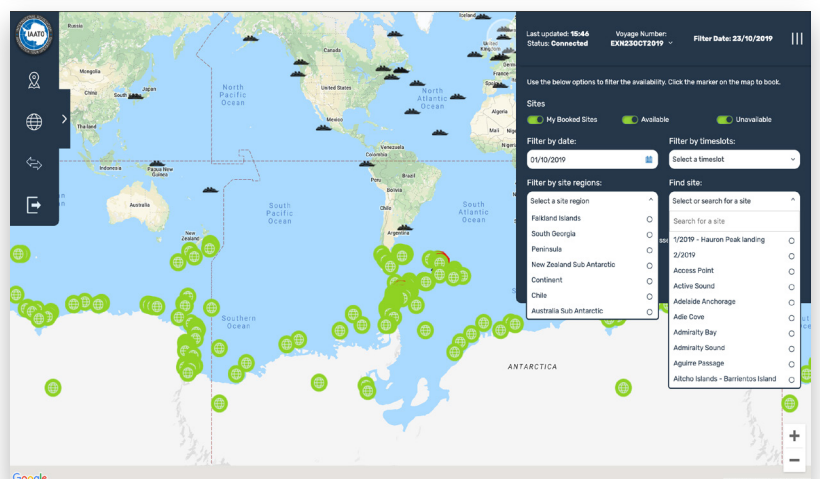
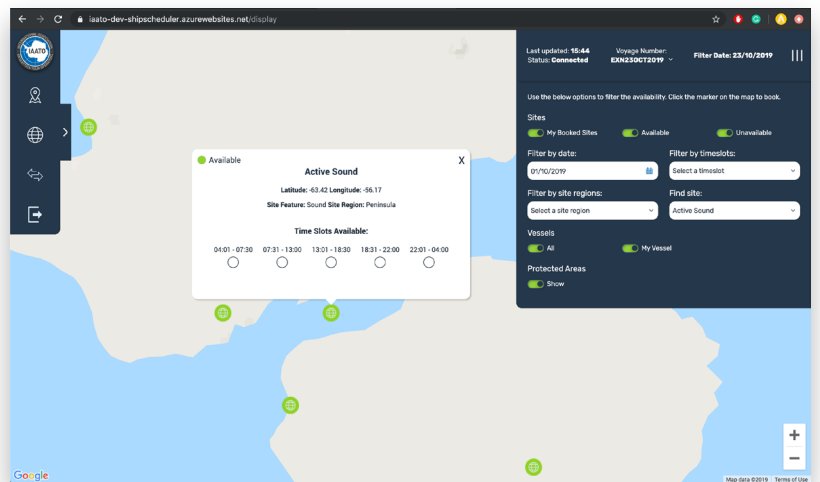
- The user can click on an available site to view which of the timeslots are available. They can select the timeslots that they would like to book by clicking the check-boxes under the corresponding time.
- If the user clicks on one of their own booked sites, a pop up will appear to indicate the site name, longitude and latitude, site feature, site region, and the option to release booked time slots. The time slots that are marked grey are that operators booked slots. They can release a slot by simply clicking the release button under the corresponding time slot (as displayed in the image above).
- The user can click on any of the vessel icons on the map to find out more information about that particular vessel.
- If a particular time slot is already booked on an available site, the user can click on this time slot to be shown which operator vessel is due to arrive at that site.



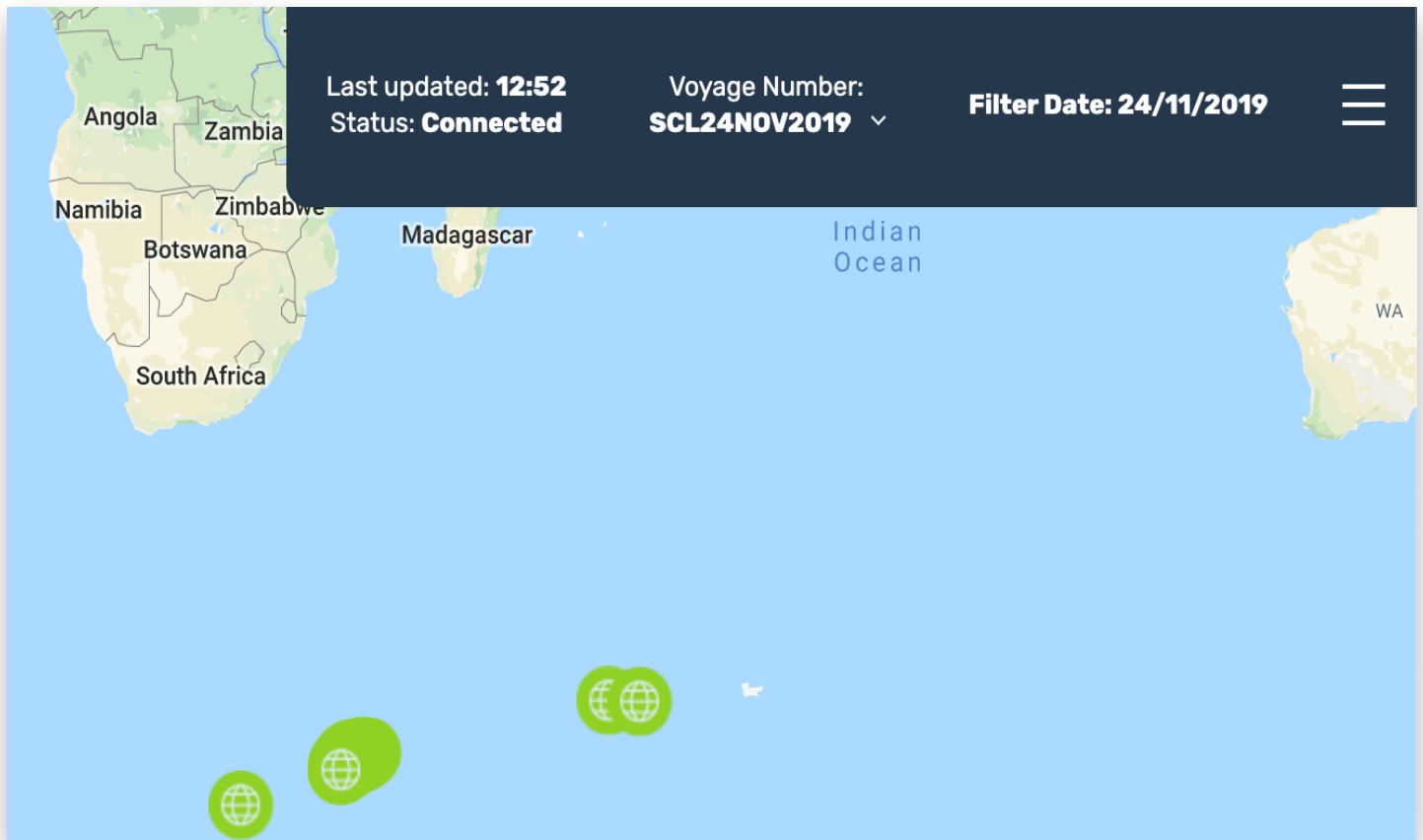
Ship Scheduler - Live Map



- You can search the list and select a site or search via the text input box at the top of the list. The search is a real-time search and will filter out sites that don't match your text input as you type.
- Once you have selected a site, the map will pan to the site and the sites info window will open.
- To clear the search once you have selected a site or typed one in you can click the X on the right hand side of the text input, or click "Clear" at the bottom of the sites list.
- If you have also filtered by a site region the list of sites will be filtered by those included in the selected site region only.



Ship Scheduler - Live Map



Monitoring your connection

- You are able to monitor your connection using the status bar at the top right.
- If you have a current connection to the messaging server this will display as above. Whenever you receive a new message the last updated time will update to that when the message was received. If this date hasn't updated but it still says you are connected this is just because no messages have been broadcast.
- If you lose this connection, most likely due to a drop in a network connection this will display as 'Disconnected'.
- If a booking attempt or release attempt is made when you are disconnected this will be added to a message queue and you will be notified of this
- Once a connection is re-established this message queue will be processed and you will be notified of any success or error messages from your initial requests.

