

Foyn Harbour – Marine Only (Draft)

Possible anchorage/ship position:
64° 32' 49" S 061° 58' 46" W

Peer Sites: Enterprise Island

IAATO

visitor site guide



Key Features

- Small boat cruising and watersports
- Historical whaling artefacts including a grounded whaling factory vessel.
- Also referred to as Gouvernoren Harbour on some charts (e.g. iSailor)



Description

TOPOGRAPHY

A glaciated archipelago to the NW of Nansen Island in Wilhelmina Bay, approximately 1.5 x 1 NM in area. There is much shallow water which requires care from boat drivers.

There are multiple historical artefacts from the whaling era scattered around the area

Metavolcanic greenstones and volcanic tuffs, likely Jurassic-Cretaceous in age.



FAUNA

Confirmed breeders: Antarctic shags, Antarctic terns (inside Governøren wreck).

Present: Brown skua, Wilson's storm petrel, Kelp gull, Weddell seal, Crabeater seal, Antarctic fur seal.

Occasional: Humpback whale, Chinstrap penguin, Minke whale.

Visitor Area

ACTIVITY AREA

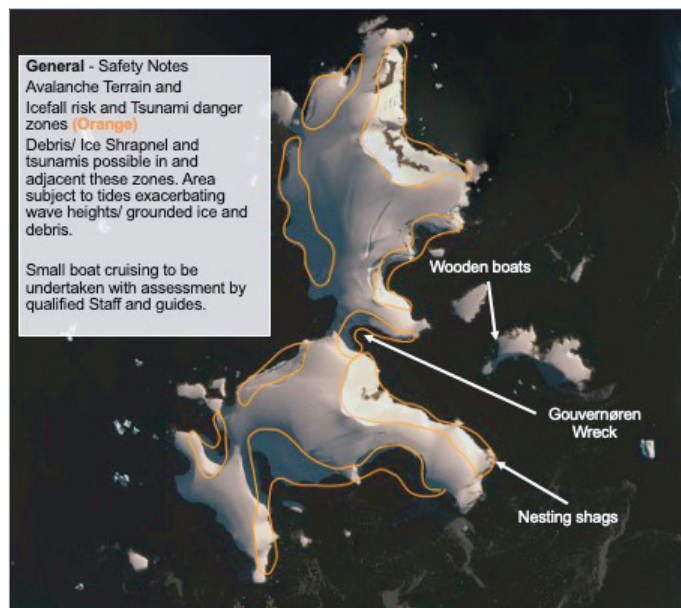
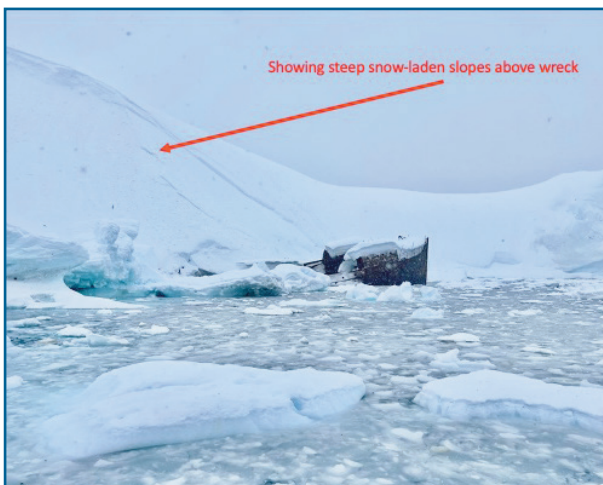
Small boat operators should review any chart data available for small boat cruising areas before going on the water. In the absence of detailed bathymetry, seek the advice of more experienced drivers on areas of potential shoal water and/or shallows.

When in doubt, driving slowly and/or consider adjusting the depth of any engine parts below the water.

VISITOR SAFETY

Appropriate distance to steep ice faces and icebergs should be maintained by small boat drivers

Some of the slopes of the islands are steep and an assessment should be made of any risks posed by snow or ice fall creating waves in the early season and/or after heavy snow, particularly in restricted waters such as those around Guvernøren. On the north aspect near the wreck, possible risk of avalanche increases from the end of December through early January. This region will be among the first aspects to have a wet slide avalanche which will expose the ice beneath.

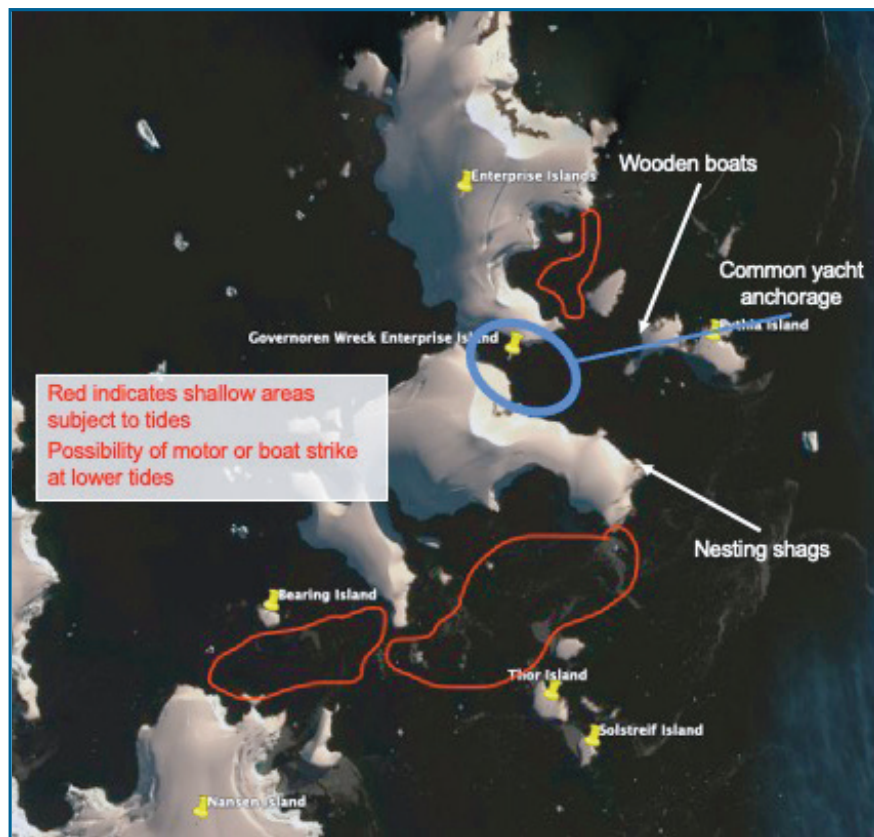


RESTRICTED ZONES

Appropriately experienced EL or guide must evaluate potential risk of glacier calving and avalanche between the Guvernøren wreck and the shoreline before navigating.

SEASONALITY

Early season may see significant snow accumulations on slopes above small boat cruising routes. Possible risk of avalanche increases from the end of December through early January near the Guvernøren wreck, where the slopes will be among the first aspects to have a wet slide avalanche which will expose the ice beneath.



Historical Information

Surveyed by M.C. Lester and T.W. Bagshawe (of Waterboat Point fame) in 1921–22, and named by whalers after factory ship Svend Foyn, which was moored here that same season.

There are multiple historical artefacts from the whaling era scattered around the area. This includes waterboats, Samson posts, steel boxes and is the site of the grounded whaling factory vessel *Governøren* which was deliberately run aground after catching fire on January 27th 1915.